

APP CRS	Rwy Idg	<b>4842</b>
<b>173°</b>	TDZE	<b>651</b>
	Apt Elev	<b>658</b>

# RNAV (GPS) RWY 17

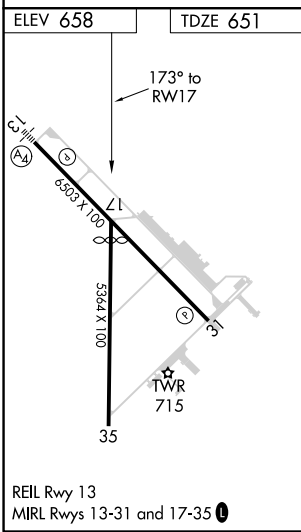
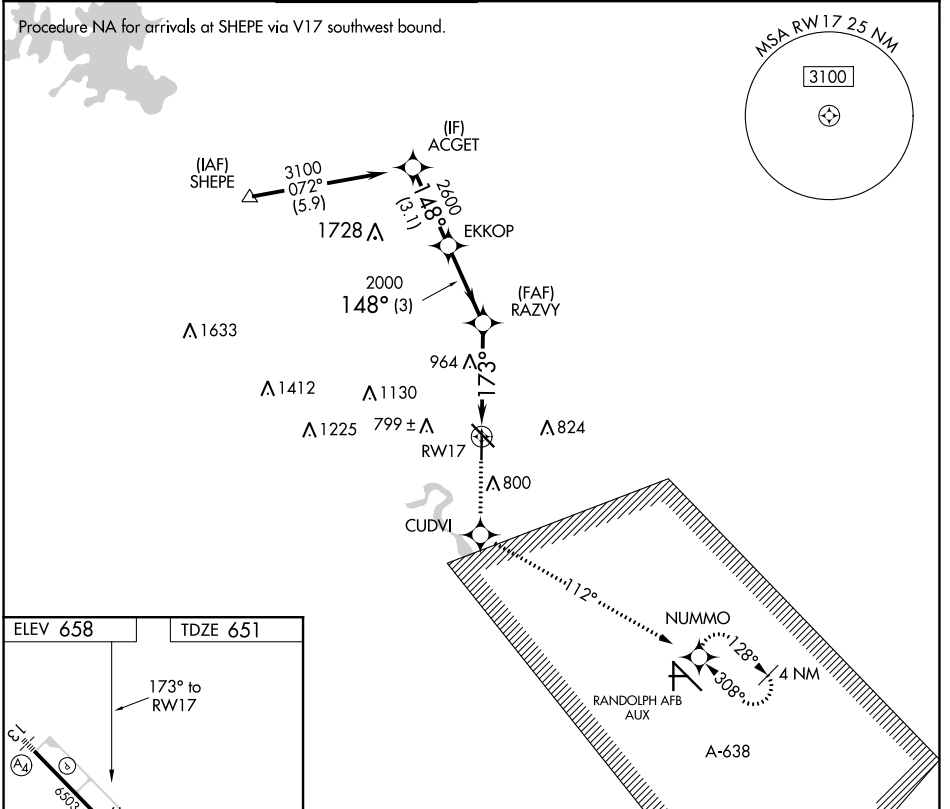
NEW BRAUNFELS RGNL (BAZ)

RNP APCH.

When local altimeter setting not received, use San Marcos Rgnl altimeter setting and increase all MDAs 60 feet and visibility Cat C 1/4 SM. VDP NA when using San Marcos Rgnl altimeter setting.

MISSED APPROACH: Climb to 3500 direct CUDVI and via 112° track to NUMMO and hold, continue climb-in-hold to 3500.

ATIS	SAN ANTONIO APP CON	NEW BRAUNFELS TOWER*	GND CON	CLNC DEL	CLNC DEL	UNICOM	CTAF
<b>119.325</b>	<b>124.45 335.625</b>	<b>127.05 285.4</b>	<b>120.175</b>	<b>134.75</b>	<b>134.75</b> (When twr closed)	<b>122.7</b>	<b>127.05</b>



3500	CUDVI	NUMMO	ACGET
↑	✧	✧	
	112°		
	IR		
	173°	2000	2600
	1.6 NM to RWY 17	3.03° TCH 45	1.48°
	1.6 NM	2.5 NM	3 NM
			3.1 NM
CATEGORY	A	B	C
LNAV MDA	1220-1	569 (600-1)	1220-1 5/8 569 (600-1 5/8)
			1220-1 3/4 569 (600-1 3/4)

Procedure Turn NA

SC-3, 04 NOV 2021 to 02 DEC 2021

SC-3, 04 NOV 2021 to 02 DEC 2021