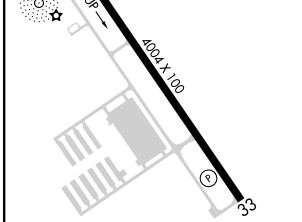
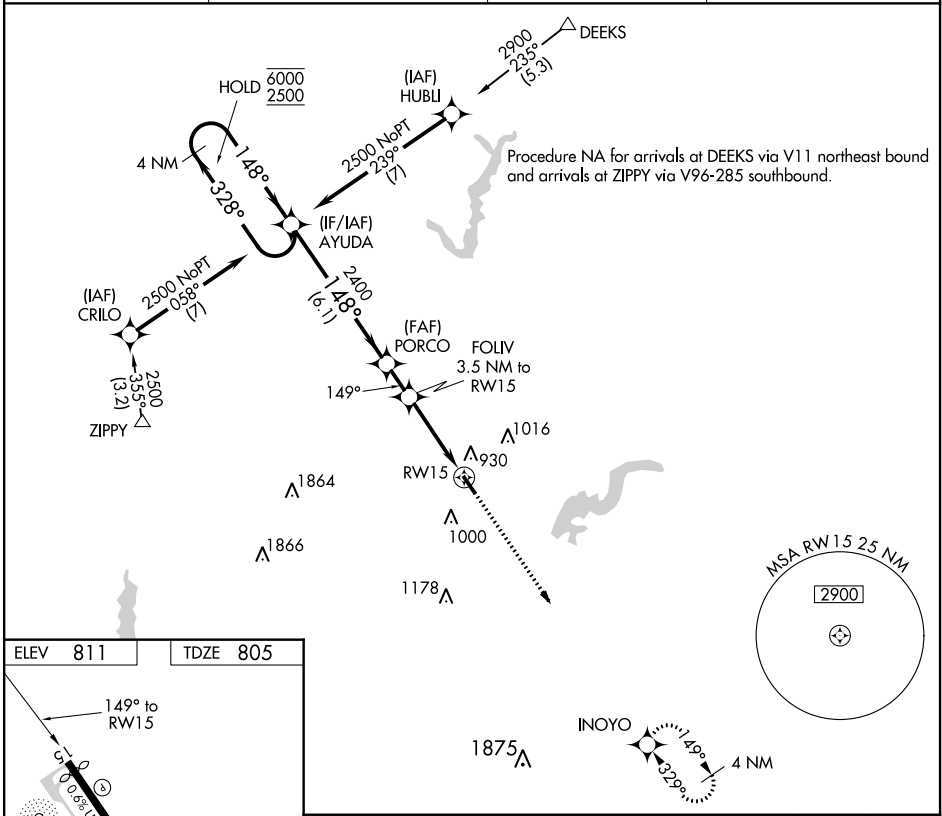


APP CRS	Rwy ldg	<b>3848</b>
<b>149°</b>	TDZE	<b>805</b>
	Apt Elev	<b>811</b>

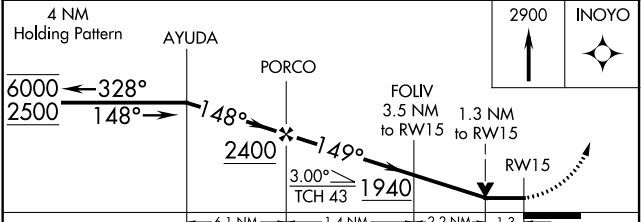
# RNAV (GPS) RWY 15

INDIANAPOLIS METROPOLITAN (UMP)

RNP APCH.			MISSED APPROACH: Climb to 2900 direct INOYO and hold.
<p><b>▼</b> Helicopter visibility reduction below ¾ SM NA. VDP NA when using Indianapolis Intl altimeter setting. When local altimeter setting not received, use Indianapolis Intl altimeter setting and increase all MDA 60 feet and LNAV Cat C visibility ¼ SM.</p> <p><b>▲</b> NA</p>			
AWOS-3 <b>119.375</b>	INDIANAPOLIS APP CON <b>127.15 317.8</b>	CLNC DEL <b>121.625</b>	UNICOM <b>123.0 (CTAF) 0</b>



ELEV	811	TDZE	805
MIRL Rwy 15-33	<b>0</b>	REIL Rwy 15 and 33	<b>0</b>



CATEGORY	A	B	C	D
LNAV MDA	1240-1	435 (500-1)	1240-1¼ 435 (500-1¼)	NA
<b>C</b> CIRCLING	1320-1 509 (600-1)	1340-1 529 (600-1)	1340-1½ 529 (600-1½)	NA

EC-2, 04 NOV 2021 to 02 DEC 2021

EC-2, 04 NOV 2021 to 02 DEC 2021