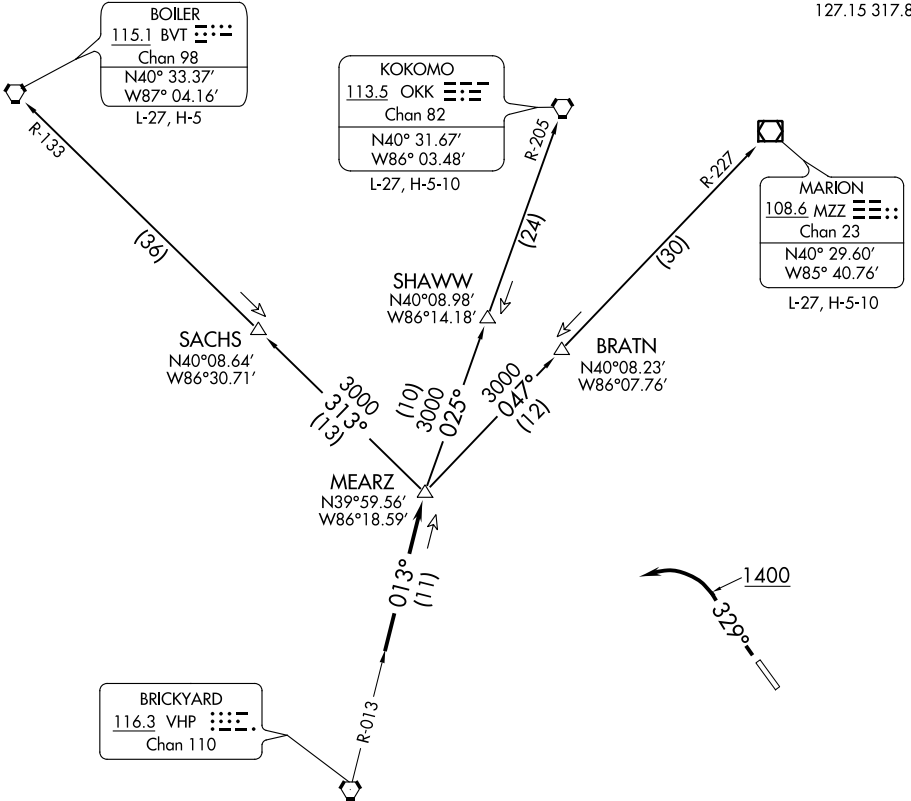


**TOP ALTITUDE:  
 ASSIGNED BY ATC**

AWOS-3  
 119.375  
 CLNC DEL  
 121.625  
 INDIANAPOLIS DEP CON  
 127.15 317.8



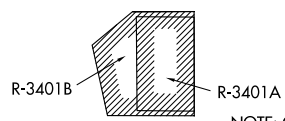
EC-2, 04 NOV 2021 to 02 DEC 2021

EC-2, 04 NOV 2021 to 02 DEC 2021

TAKEOFF MINIMUMS  
 Rwy 15: NA-Obstacles.  
 Rwy 33: Standard.

- NOTE: RADAR required.
- NOTE: Select appropriate localizer/DME frequency/channel prior to departure.
- NOTE: Turbojets accelerate to 250K until reaching 10000, if unable advise ATC.
- NOTE: Assigned to aircraft with a requested altitude of 11000 or above.

(NARRATIVE ON FOLLOWING PAGE)



NOTE: Chart not to scale.