

(MAREO5.MAREO) 20086
MAREO FIVE DEPARTURE

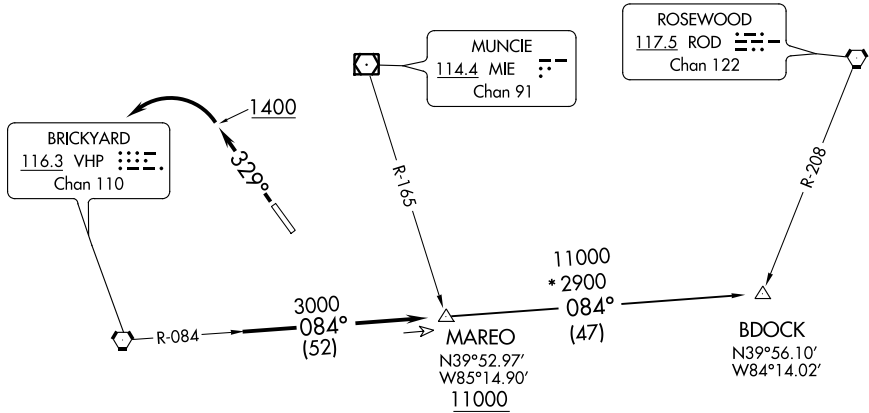
AL-5902 (FAA)

INDIANAPOLIS METROPOLITAN (UMP)
 INDIANAPOLIS, INDIANA

AWOS-3
 119.375
 CLNC DEL
 121.625
 INDIANAPOLIS DEP CON
 127.15 317.8

**TOP ALTITUDE:
 ASSIGNED BY ATC**

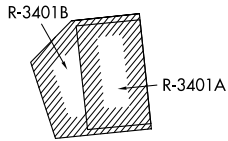
TAKEOFF MINIMUMS
 Rwy 15: NA-obstacles.
 Rwy 33: Standard.



EC-2, 04 NOV 2021 to 02 DEC 2021

EC-2, 04 NOV 2021 to 02 DEC 2021

- NOTE: RADAR required.
- NOTE: Select appropriate localizer/DME frequency/channel prior to departure.
- NOTE: Turbojets accelerate to 250K until reaching 10000, if unable advise ATC.
- NOTE: Assigned to aircraft with a requested altitude of 11000 or above.



NOTE: Chart not to scale.



DEPARTURE ROUTE DESCRIPTION

TAKEOFF RWY 33: Climb heading 329° to 1400 before turning left. Then on assigned heading to assigned altitude. Thence....

DEPARTING ALL OTHER AUTHORIZED RUNWAYS: Climb on assigned heading to assigned altitude. Thence....

....expect RADAR vectors to join VHP R-084 to MAREO INT then via transition or assigned route. Expect clearance to requested altitude ten minutes after departure.

BDOCK TRANSITION (MAREO5.BDOCK): From over MAREO INT via VHP R-084 to BDOCK INT.