

# KARR SIX DEPARTURE (RNAV)

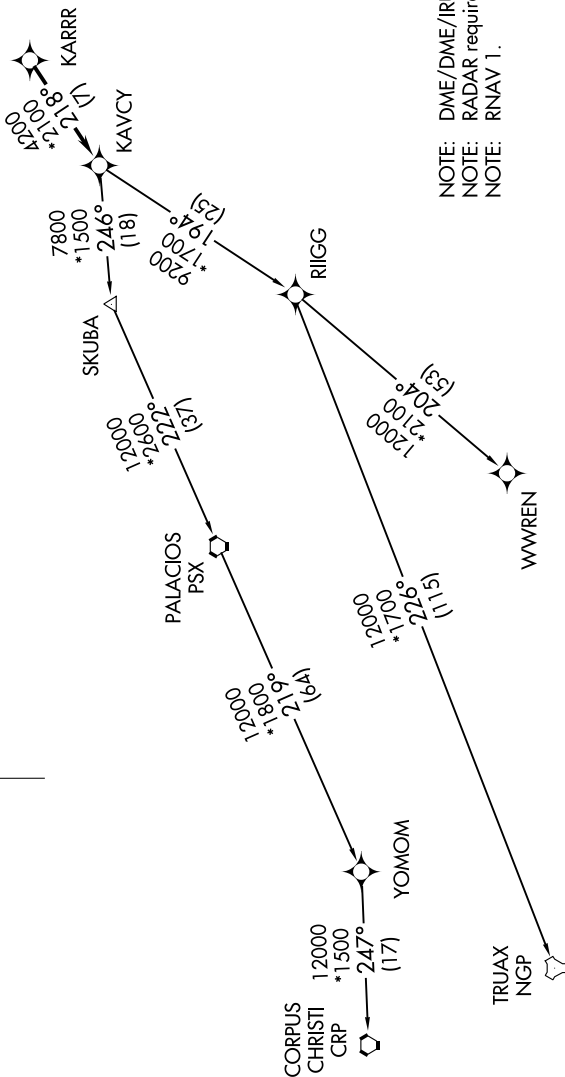
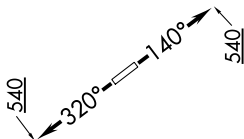
**TOP ALTITUDE:  
ASSIGNED BY ATC**

**TAKEOFF MINIMUMS**

Rwys 14, 32:

Standard with minimum climb of 500' per NM to 540.

CTAF  
122.8  
HOUSTON DEP CON  
134.45 284.0



NOTE: DME/DME/IRU or GPS required.  
NOTE: RADAR required.  
NOTE: RNAV 1.

NOTE: Chart not to scale.

(NARRATIVE ON FOLLOWING PAGE)

# KARR SIX DEPARTURE (RNAV)