

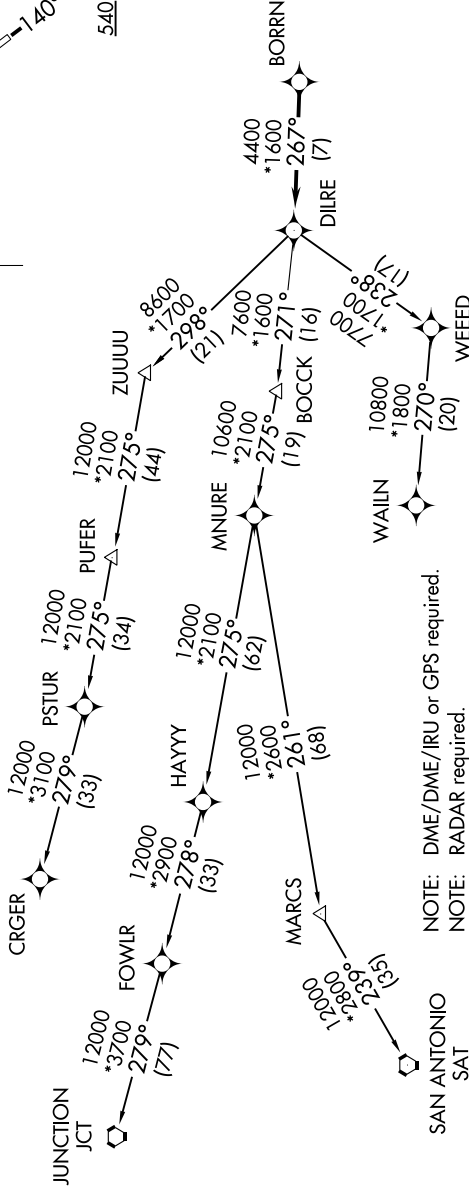
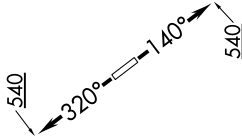
BORRN FOUR DEPARTURE (RNAV)

SC-5, 04 NOV 2021 to 02 DEC 2021

CTAF
122.8
HOUSTON DEP CON
134.45 284.0

TAKEOFF MINIMUMS:
Rwy 14, 32: Standard with minimum
climb of 500' per NM to 540.

**TOP ALTITUDE:
ASSIGNED BY ATC**



NOTE: DME/DME/IRU or GPS required.
NOTE: RADAR required.
NOTE: RNAV 1.
NOTE: CRGR TRANSITION ATC assigned only
for aircraft departing 54T, AXH, EFD, GLS,
HPY, IWS, LBX, LVJ, SGR, TME, T00, T41.

(NARRATIVE ON FOLLOWING PAGE)

NOTE: Chart not to scale.

BORRN FOUR DEPARTURE (RNAV)

SC-5, 04 NOV 2021 to 02 DEC 2021