

HURCN ONE DEPARTURE (RNAV)

**TOP ALTITUDE:
ASSIGNED BY ATC**

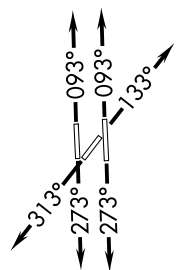
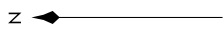
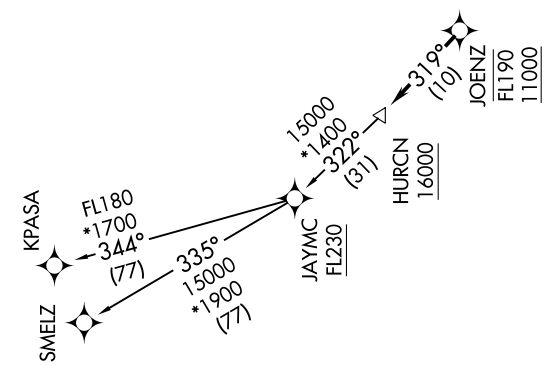
TAKEOFF MINIMUMS

Rwy 9L: Standard with minimum climb of 500' per NM to 1300.
 Rwy 9R: Standard with minimum climb of 500' per NM to 1500.
 Rwy 13: Standard with minimum climb of 500' per NM to 1800.
 Rwy 27L: Standard with minimum climb of 500' per NM to 1900.
 Rwy 27R: Standard with minimum climb of 500' per NM to 1700.
 Rwy 31: Standard with minimum climb of 500' per NM to 1400.

NOTE: RNAV 1.
 NOTE: RADAR required.
 NOTE: Jet aircraft only.
 NOTE: DME/DME/IRU or GPS required.
 NOTE: Accelerate to 250K, if unable, advise ATC.

(NARRATIVE ON FOLLOWING PAGE)

SE-3, 04 NOV 2021 to 02 DEC 2021



- ATIS 124.0
- CLNC DEL 133.0
- GND CON 121.7
- TAMiami TOWER ★ 118.9 (CTAF)
- MIAMI DEP CON 125.5 354.1

NOTE: Chart not to scale.

HURCN ONE DEPARTURE (RNAV)

(HURCN1.HURCN) 12AUG21

SE-3, 04 NOV 2021 to 02 DEC 2021