

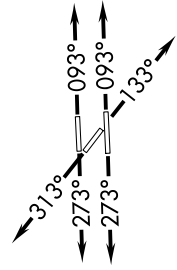
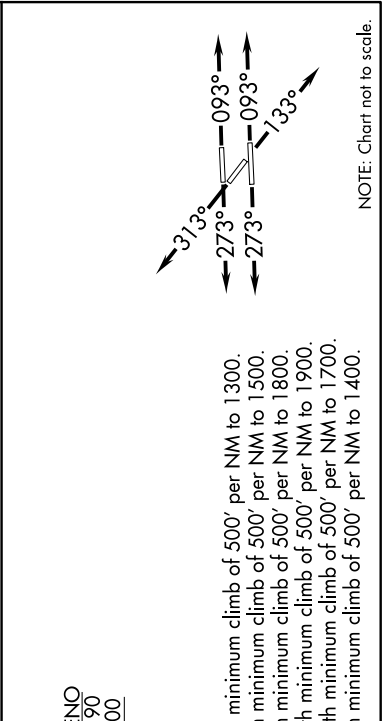
BNGOS ONE DEPARTURE (RNAV)

SE-3, 04 NOV 2021 to 02 DEC 2021

DEPARTURE ROUTE DESCRIPTION

TAKEOFF RUNWAYS 9L/R: Climb on heading 093° or as assigned for RADAR vectors to cross **MRENO** between 8000 and FL190, thence...
TAKEOFF RUNWAY 13: Climb on heading 133° or as assigned for RADAR vectors to cross **MRENO** between 8000 and FL190, thence...
TAKEOFF RUNWAYS 27L/R: Climb on heading 273° or as assigned for RADAR vectors to cross **MRENO** between 8000 and FL190, thence...
TAKEOFF RUNWAY 31: Climb on heading 313° or as assigned for RADAR vectors to cross **MRENO** between 8000 and FL190, thence...
 ...on track 322° to BNGOS, then on **TRANSITION**, maintain ATC assigned altitude, expect clearance to filed altitude within 10 minutes after departure.

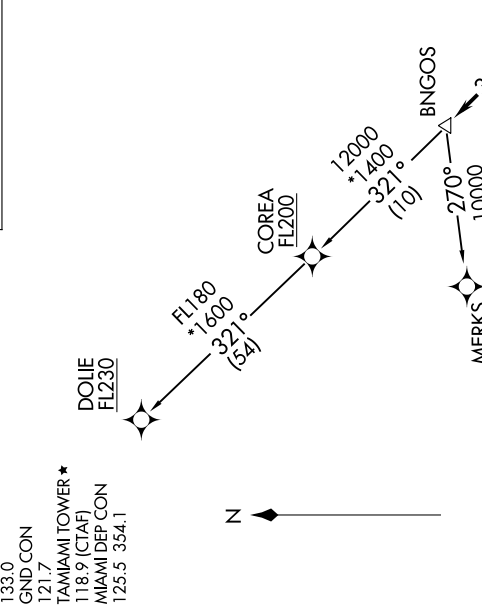
COREA TRANSITION (BNGOS1.COREA)
DOJIE TRANSITION (BNGOS1.DOJIE)
MERKS TRANSITION (BNGOS1.MERKS)



NOTE: Chart not to scale.

**TOP ALTITUDE:
ASSIGNED BY ATC**

ATIS 124.0
 CLNC DEL 133.0
 GND CON 121.7
 TAMAMI TOWER * 118.9 (CTAF)
 MIAMI DEP CON 125.5 354.1



TAKEOFF MINIMUMS

Rwy 9L: Standard with minimum climb of 500' per NM to 1300.
 Rwy 9R: Standard with minimum climb of 500' per NM to 1500.
 Rwy 13: Standard with minimum climb of 500' per NM to 1800.
 Rwy 27L: Standard with minimum climb of 500' per NM to 1900.
 Rwy 27R: Standard with minimum climb of 500' per NM to 1700.
 Rwy 31: Standard with minimum climb of 500' per NM to 1400.

NOTE: RNAV 1.
NOTE: RADAR required.
NOTE: Jet aircraft only.
NOTE: DME/DME/IRU or GPS required.
NOTE: Accelerate to 250K, if unable, advise ATC.
NOTE: MERKS TRANSITION ATC assigned only except aircraft landing: MKY, RSW, APF and FMY.

BNGOS ONE DEPARTURE (RNAV)

(BNGOS1.BNGOS) 12AUG21

SE-3, 04 NOV 2021 to 02 DEC 2021