

WAAS CH <b>58010</b> W23A	APP CRS <b>231°</b>	Rwy Idg <b>5572</b> TDZE <b>471</b> Apt Elev <b>480</b>
---------------------------------	------------------------	---

# RNAV (GPS) RWY 23

MOUNT VERNON (MVN)

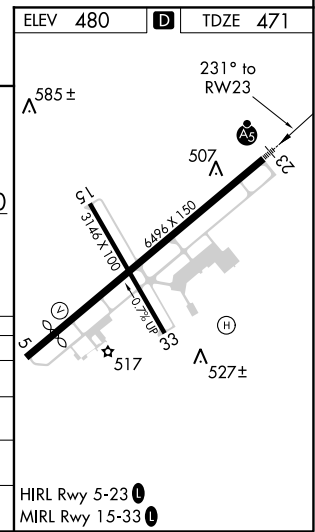
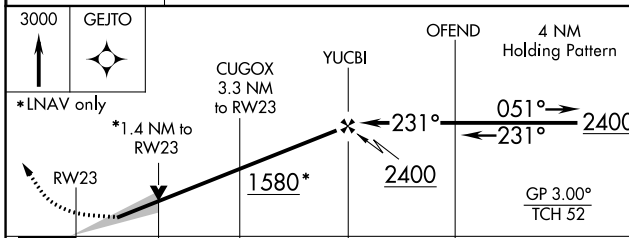
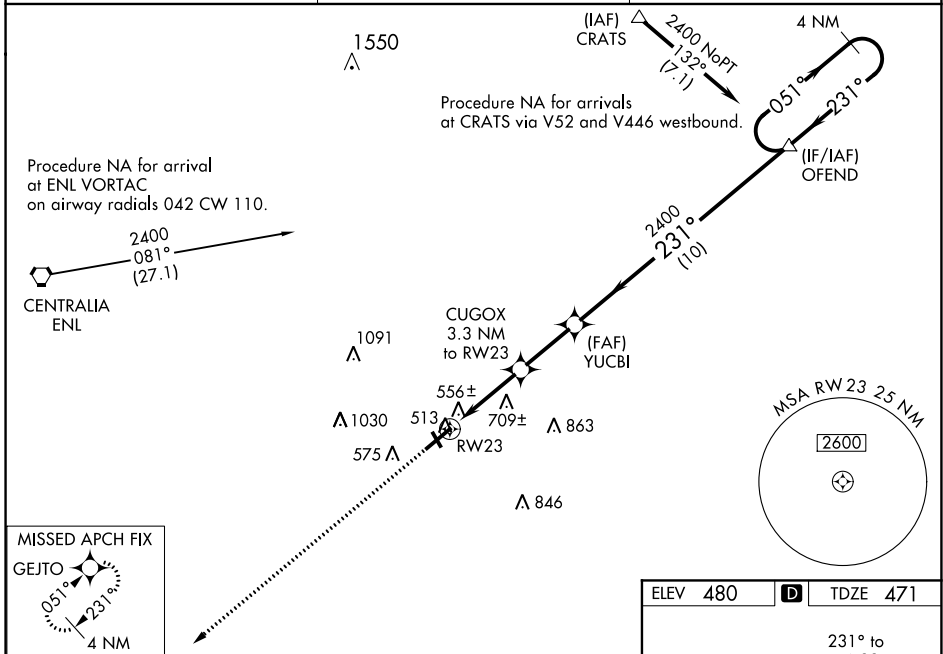
**⚠** For uncompensated Baro-VNAV systems, LNAV/VNAV NA below -15° C (5°F) or above 48° C (118°F). DME/DME RNP-0.3 NA. When local altimeter setting not received, use Centralia altimeter setting and increase all DA 45 feet and all MDA 60 feet, and increase LNAV Cat C/D and Circling Cat D visibility ¼ mile. For inop MALSRS, when using Centralia altimeter setting, increase LPV all Cats visibility to 1 mile. VDP and Baro-VNAV NA when using Centralia altimeter setting. Circling to Rwy 15/33 NA at night.

MALSRS



**MISSED APPROACH:**  
Climb to 3000 direct GEJTO and hold.

AWOS-3PT <b>118.2</b>	KANSAS CITY CENTER <b>127.7 351.825</b>	UNICOM <b>123.0(CTAF) 0</b>
--------------------------	--	--------------------------------



CATEGORY	A	B	C	D
LPV DA	721-½		250 (300-½)	
LNAV/VNAV DA	873-1		402 (400-1)	
LNAV MDA	960-½	489 (500-½)	960-¾ 489 (500-¾)	960-1 489 (500-1)
CIRCLING	1000-1	520 (600-1)	1000-1½ 520 (600-1½)	1140-2 660 (700-2)

HIRL Rwy 5-23 0  
MIRL Rwy 15-33 0

EC-3, 04 NOV 2021 to 02 DEC 2021

EC-3, 04 NOV 2021 to 02 DEC 2021