

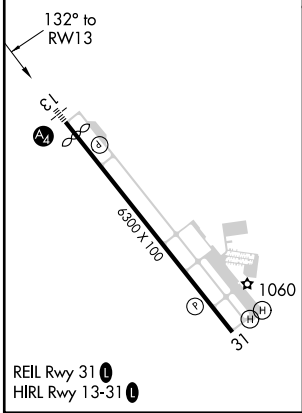
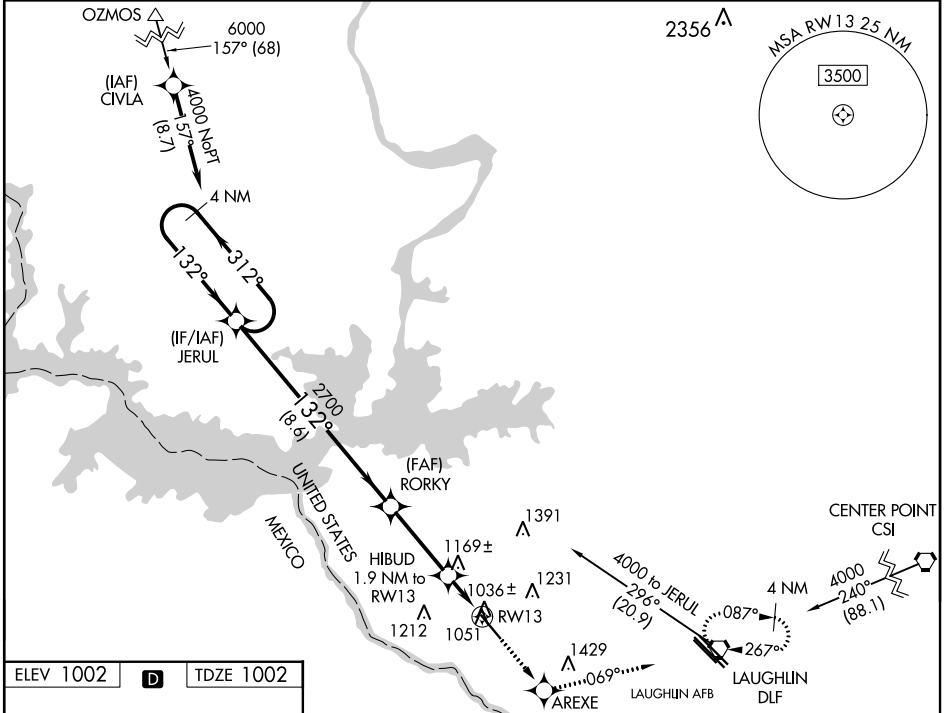
WAAS CH 86499	APP CRS 132°	Rwy Idg TDZE 1002	6000
W13A		Apt Elev 1002	

RNAV (GPS) RWY 13

DEL RIO INTL (DRT)

RNP APCH.	MALS	MISSED APPROACH: Climb to 4000 direct AREXE and on 069° track to DLF VORTAC and hold, continue climb-in-hold to 4000.
<p>⚠ Circling NA for Cat D southwest of Rwy 13-31. When local altimeter setting not received, use Laughlin AFB altimeter setting and increase all DA 30 feet and all MDA 40 feet, increase LPV visibility all Cats, LNAV Cats C and D and Circling Cats C and D visibility ¼ SM. Baro-VNAV NA when using Laughlin AFB altimeter setting. For uncompensated Baro-VNAV systems, LNAV/VNAV NA below -17° C (2°F) or above 47° C (116°F).</p>		

ASOS 118.525	DEL RIO APP CON * 119.6 259.1	CLNC DEL 120.5	UNICOM 122.8 (CTAF)
------------------------	---	--------------------------	-------------------------------



VGSi and RNAV glidepath not coincident (VGSi Angle 3.00/TCH 47).		4000	AREXE	tr 069°	DLF
Holding Pattern		JERUL	RORKY	* HIBUD 1.9 NM to RW13	* LNAV only.
4000	← 312° →	2700	2700	1640	RW13
GP 3.00° TCH 48		8.6 NM		3.2 NM	1.9
CATEGORY	A	B	C	D	
LPV DA		1252-¾	250 (300-¾)		
LNAV/VNAV DA		1401-1	399 (400-1)		
LNAV MDA	1500-½	498 (500-½)	1500-¾ 498 (500-¾)	1500-1 498 (500-1)	
CIRCLING	1500-1 498 (500-1)	1560-1 558 (600-1)	1740-2 738 (800-2)	1740-2½ 738 (800-2½)	

SC-3, 04 NOV 2021 to 02 DEC 2021

SC-3, 04 NOV 2021 to 02 DEC 2021