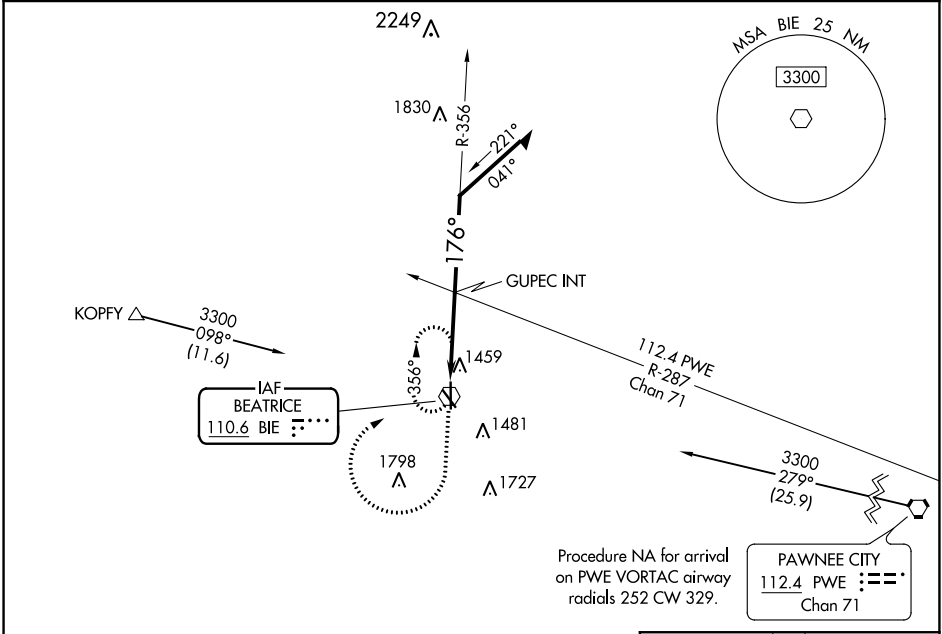


**VOR RWY 18**  
BEATRICE MUNI (BIE)

VOR BIE <b>110.6</b>	APP CRS <b>176°</b>	Rwy Idg TDZE Apt Elev <b>5602</b> <b>1324</b> <b>1324</b>
-------------------------	------------------------	--

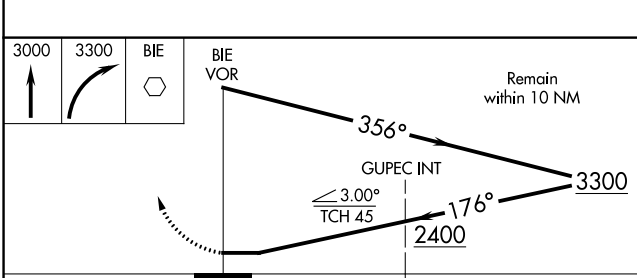
**▽** Rwy 18 helicopter visibility reduction below 3/4 SM NA. **MISSED APPROACH:** Climb to 3000 then climbing right turn to 3300 direct BIE VOR and hold.

AWOS-3 <b>125.325</b>	MINNEAPOLIS CENTER <b>126.4 317.7</b>	UNICOM <b>122.8 (CTAF)</b>
--------------------------	--	-------------------------------

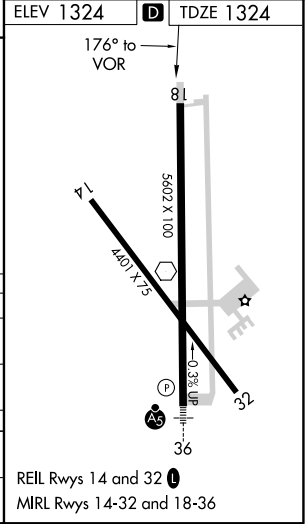


NC-2, 04 NOV 2021 to 02 DEC 2021

NC-2, 04 NOV 2021 to 02 DEC 2021



CATEGORY	A	B	C	D
S-18	2400-1¼ 1076 (1100-1¼)	2400-1½ 1076 (1100-1½)	2400-3	1076 (1100-3)
<b>C</b> CIRCLING	2400-1¼ 1076 (1100-1¼)	2400-1½ 1076 (1100-1½)	2400-3	1076 (1100-3)
GUPEUC FIX MINIMUMS (DUAL VOR RECEIVERS REQUIRED)				
S-18	1760-1	436 (500-1)	1760-1¼	436 (500-1¼)
<b>C</b> CIRCLING	1820-1	496 (500-1)	2000-2 676 (700-2)	2100-2½ 776 (800-2½)



REIL Rwy 14 and 32 **Ⓛ**  
MIRL Rwy 14-32 and 18-36