


WAAS CH <b>61099</b> <b>W36A</b>	APP CRS <b>356°</b>	Rwy Idg <b>5602</b> TDZE <b>1307</b> Apt Elev <b>1324</b>
--	------------------------	---

# RNAV (GPS) RWY 36


BEATRICE MUNI (BIE)

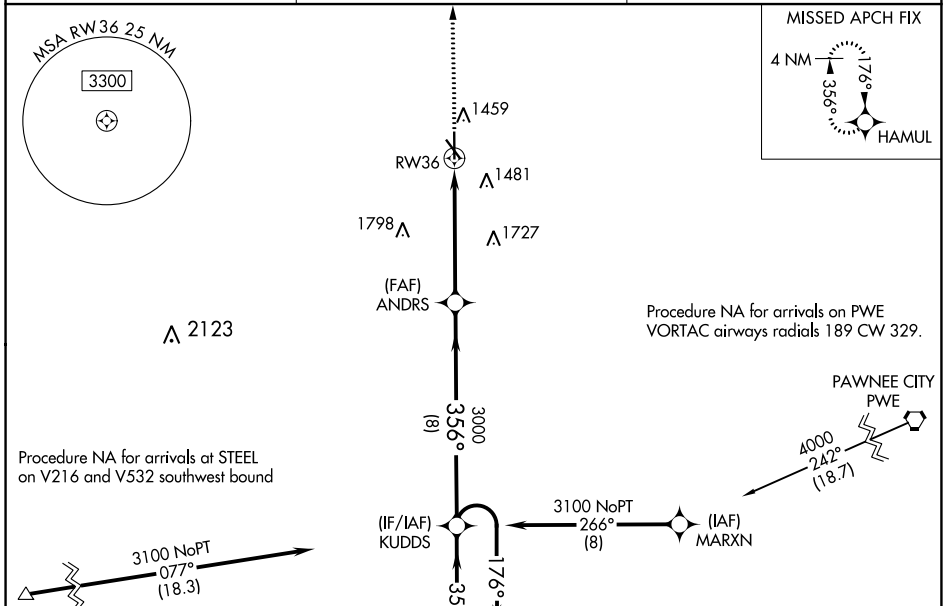
**⚠** Inoperative table does not apply to LPV all Cats. For uncompensated Baro-VNAV systems, LNAV/VNAV NA below -22°C (-7°F) or above 54°C (130°F). For inoperative MALSRL, increase LNAV/VNAV all Cats visibility to ½ mile and LNAV Cat A/B visibility to 1. DME/DME RNP-0.3 NA.


**MALSRL**  
  
MISSED APPROACH: Climb to 3900 direct HAMUL and hold.

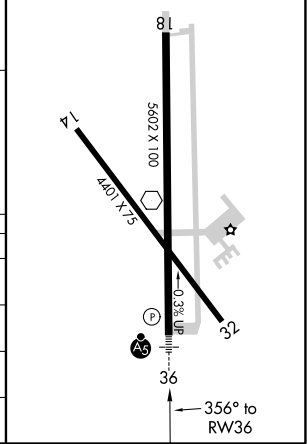
AWOS-3  
**125.325**

MINNEAPOLIS CENTER  
**126.4 317.7**

UNICOM  
**122.8 (CTAF)** 



ELEV 1324	<b>D</b> TDZE 1307
REIL Rwy 14 and 32	
MIRL Rwy 14-32 and 18-36	



CATEGORY	A	B	C	D
LPV DA		1507-¾	200 (200-¾)	
LNAV/VNAV DA		1559-¾	252 (300-¾)	
LNAV MDA	1840-¾ 533 (600-¾)		1840-1 533 (600-1)	
<b>C</b> CIRCLING	1840-1 516 (600-1)		2000-2 676 (700-2)	2100-2½ 776 (800-2½)

NC-2, 04 NOV 2021 to 02 DEC 2021

NC-2, 04 NOV 2021 to 02 DEC 2021