

WAAS CH 42920 W18A	APP CRS 176°	Rwy Idg TDZE Apt Elev	5602 1324 1324
--	------------------------	-----------------------------	---

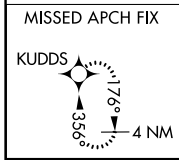
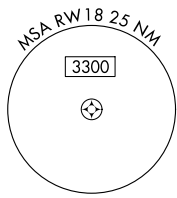
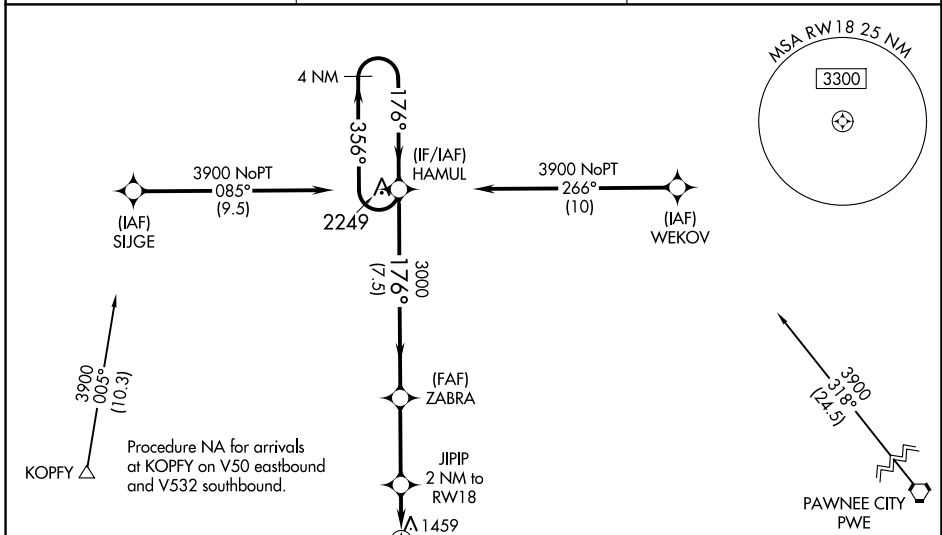
RNAV (GPS) RWY 18

BEATRICE MUNI (BIE)

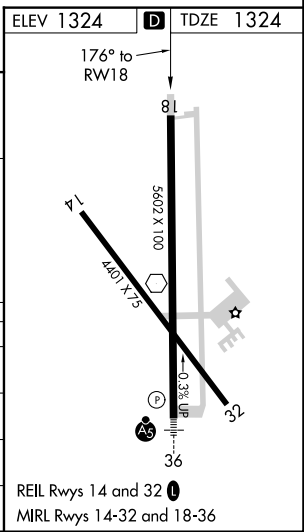
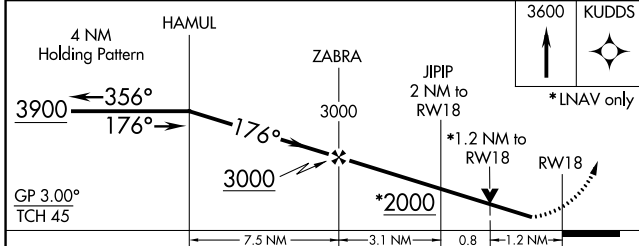
⚠ For uncompensated Baro-VNAV systems, LNAV/VNAV NA below -17°C (2°F) or above 35°C (95°F).
⚠ DME/DME RNP-0.3 NA.
 Rwy 18 helicopter visibility reduction below ¾ SM NA.

MISSED APPROACH: Climb to 3600 direct KUDD5 and hold.

AWOS-3 125.325	MINNEAPOLIS CENTER 126.4 317.7	UNICOM 122.8 (CTAF) 0
--------------------------	--	---------------------------------



Procedure NA for arrivals on PWE VORTAC airway radials 252 CW 015.



CATEGORY	A	B	C	D
LPV DA		1574-¾	250 (300-¾)	
LNAV/VNAV DA		1663-1⅛	339 (400-1⅛)	
LNAV MDA	1760-1	436 (500-1)	1760-1¼	436 (500-1¼)
C CIRCLING	1820-1	496 (500-1)	2000-2 676 (700-2)	2100-2½ 776 (800-2½)

NC-2, 04 NOV 2021 to 02 DEC 2021

NC-2, 04 NOV 2021 to 02 DEC 2021