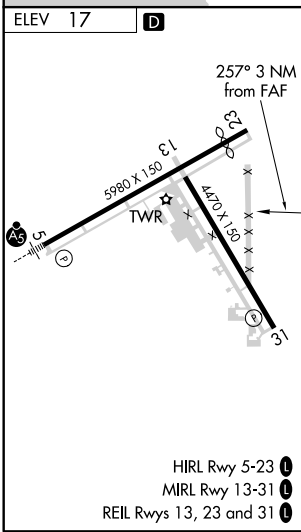
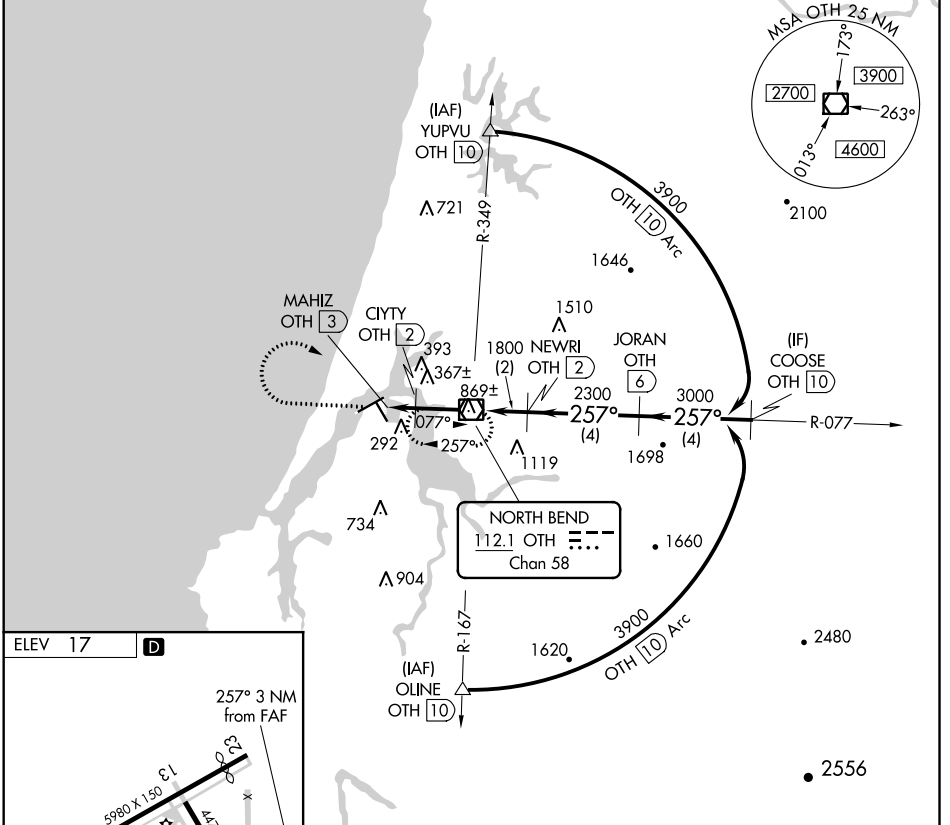


VOR/DME OTH <b>112.1</b> Chan <b>58</b>	APP CRS <b>257°</b>	Rwy Idg TDZE Apt Elev	<b>N/A</b> <b>N/A</b> <b>17</b>
---	------------------------	-----------------------------	---------------------------------------

**VOR-B**  
SOUTHWEST OREGON RGNL (OTH)

DME required.		MISSED APPROACH: Climb to 2300 then climbing right turn to 3600 direct OTH VOR/DME and hold.	
AWOS-3PT <b>135.075</b>	SEATTLE CENTER <b>127.55 254.35</b>	<b>NORTH BEND TOWER*</b> <b>118.45 (CTAF) 0</b>	GND CON <b>127.1</b>



	2300	3600	OTH				
	↑	↷					
				NEWRI OTH (2)	JORAN OTH (6)		COOSE OTH (10)
						3900	
						3000	
						2300	
						1800	
						1060	
	1 NM	2 NM	2 NM	4 NM	4 NM		
CATEGORY	A	B	C	D			
<b>CIRCLING</b>	700-1 683 (700-1)	820-1 803 (900-1)	1100-3 1083 (1100-3)	1180-3 1163 (1200-3)			

NW-1, 04 NOV 2021 to 02 DEC 2021

NW-1, 04 NOV 2021 to 02 DEC 2021