

APP CRS <b>328°</b>	Rwy Idg <b>5256</b> TDZE <b>933</b> Apt Elev <b>942</b>
------------------------	---

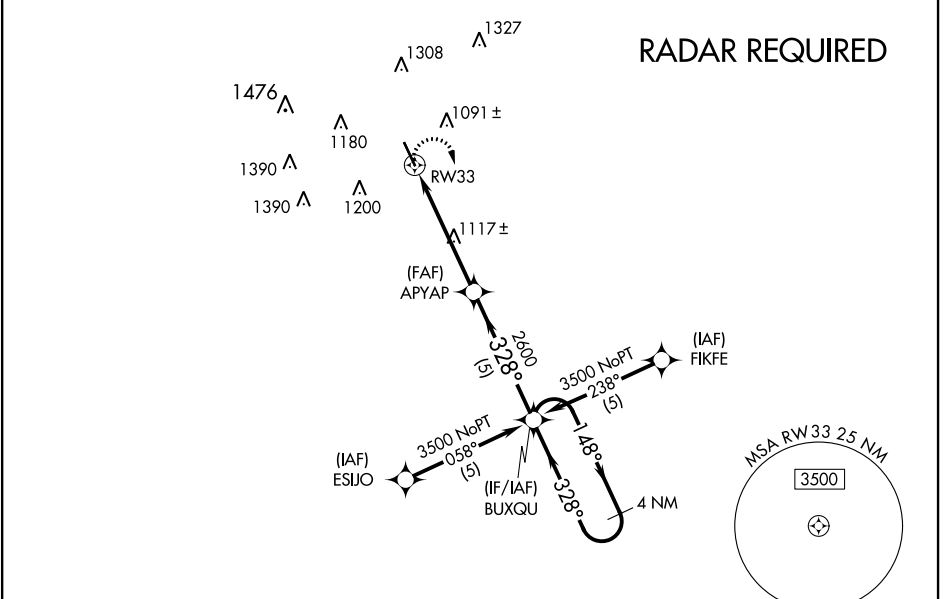
# RNAV (GPS) RWY 33

GARNER FIELD (UVA)

**⚠** When local altimeter setting not received, use South Texas Rgnl at Hondo altimeter setting and increase all MDA 100 feet; increase LNAV Cat C/D and Circling Cat C/D visibility ¼ SM. DME/DME RNP-0.3 NA.

**MISSED APPROACH:**  
Climbing right turn to 3500 direct BUXQU WP and hold.

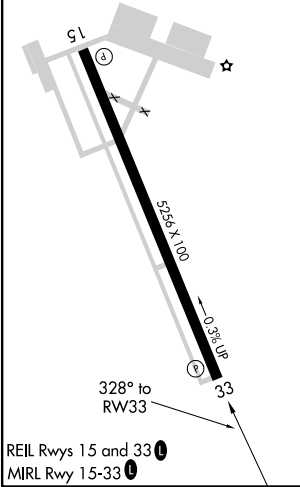
AWOS-3 <b>124.175</b>	HOUSTON CENTER <b>134.95 269.4</b>	UNICOM <b>122.8 (CTAF) 0</b>
--------------------------	---------------------------------------	---------------------------------



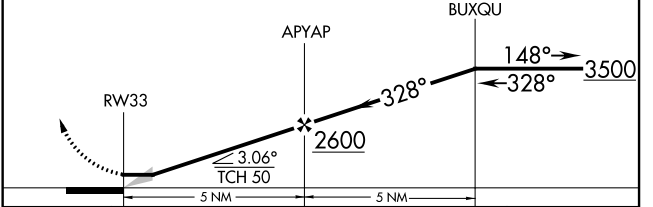
SC-3, 04 NOV 2021 to 02 DEC 2021

SC-3, 04 NOV 2021 to 02 DEC 2021

ELEV <b>942</b>	TDZE <b>933</b>
-----------------	-----------------



**3500 BUXQU** VGSi and descent angle not coincident (VGSi Angle 3.00/TCH 35). **4 NM Holding Pattern**



CATEGORY	A	B	C	D
GLS DA			NA	
LNAV/VNAV DA			NA	
LNAV MDA	1380-1 447 (500-1)		1380-1¼ 447 (500-1¼)	1380-1½ 447 (500-1½)
CIRCLING	1380-1 438 (500-1)	1460-1 518 (600-1)	1620-2 678 (700-2)	1620-2¼ 678 (700-2¼)