

NDB UVA <b>281</b>	APP CRS <b>328°</b>	Rwy ldg TDZE Apt Elev	<b>5256</b> <b>933</b> <b>942</b>
-----------------------	------------------------	-----------------------------	-----------------------------------------

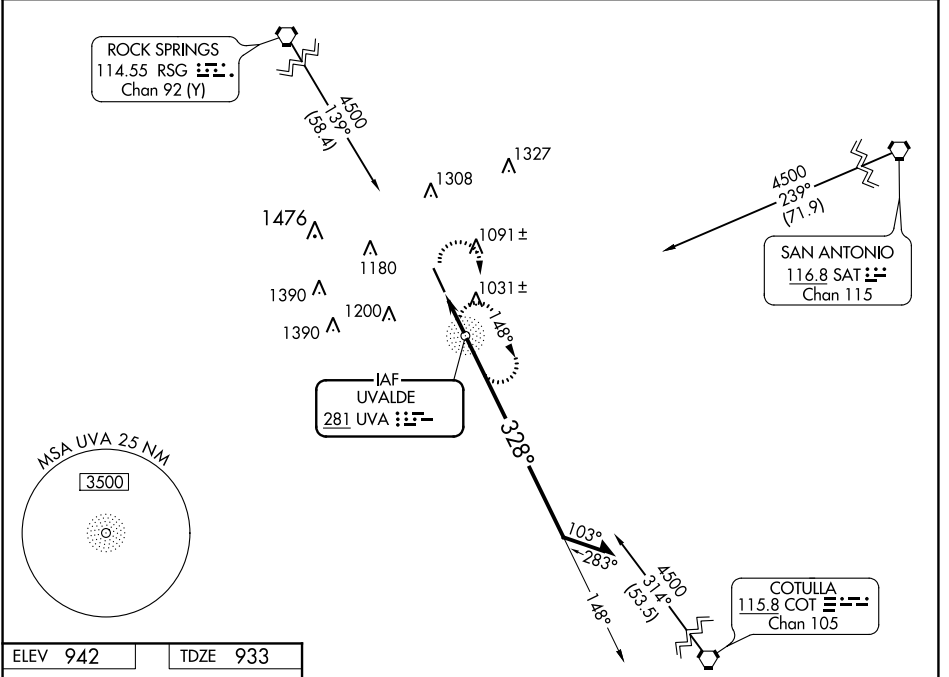
# NDB RWY 33

GARNER FIELD (UVA)

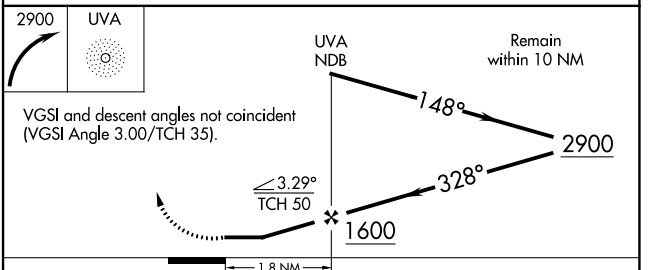
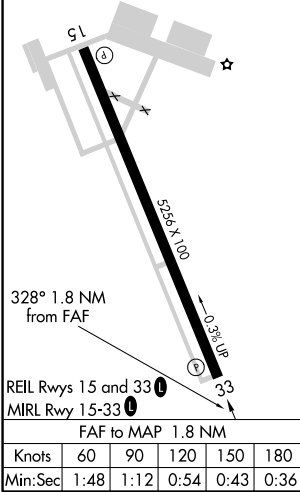
**NA** Obtain local altimeter setting on CTAF; when not received, use South Texas Rgnl at Hondo altimeter setting.

MISSED APPROACH: Climbing right turn to 2900 direct UVA NDB and hold.

AWOS-3 <b>124.175</b>	HOUSTON CENTER <b>134.95 269.4</b>	UNICOM <b>122.8 (CTAF) 0</b>
--------------------------	---------------------------------------	---------------------------------



ELEV 942	TDZE 933
----------	----------



CATEGORY	A	B	C	D
S-33	1340-1	407 (400-1)	1340-1/4	407 (400-1/4)
CIRCLING	1340-1 398 (400-1)	1460-1 518 (600-1)	1620-2 678 (700-2)	1620-2/4 678 (700-2/4)
SOUTH TEXAS RGNL AT HONDO ALTIMETER SETTING MINIMUMS				
S-33	1440-1	507 (500-1)	1440-1/2	507 (500-1/2)
CIRCLING	1440-1 498 (500-1)	1560-1 618 (700-1)	1720-2/4 778 (800-2/4)	1720-2/2 778 (800-2/2)

SC-3, 04 NOV 2021 to 02 DEC 2021

SC-3, 04 NOV 2021 to 02 DEC 2021