

MARYSVILLE, CALIFORNIA

# TACAN Y RWY 33

TACAN BAB Chan 23	APCH CRS 317°	Rwy ldg TDZE Arpt Elev	12,001 105 113
----------------------	------------------	------------------------------	----------------------

AL-771 (USAF)

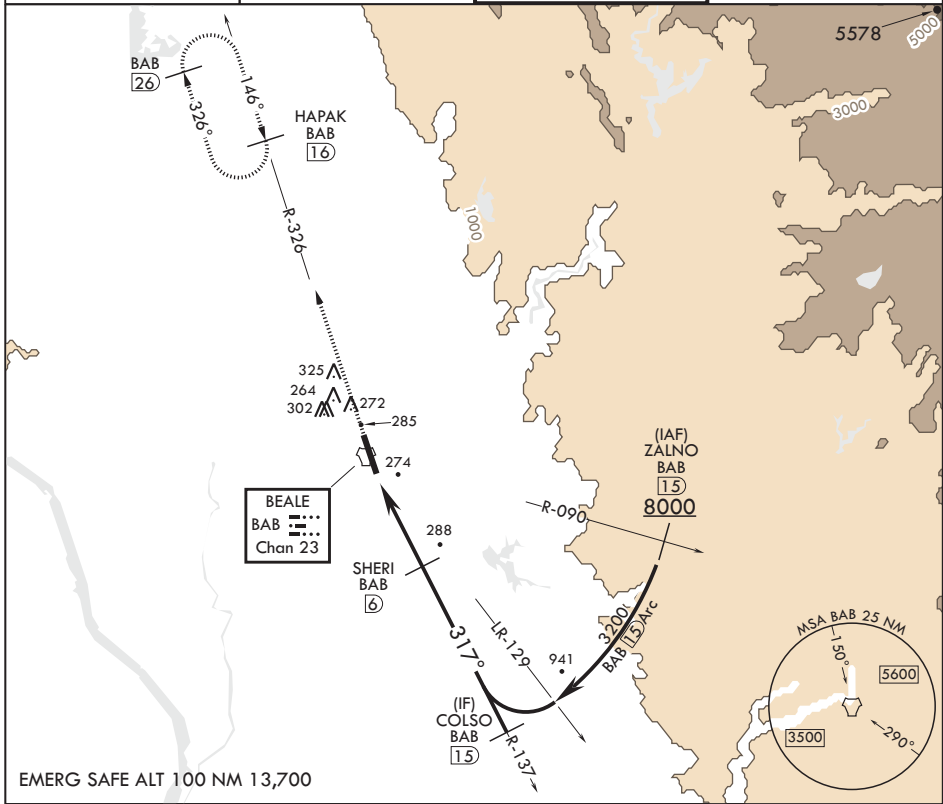
BEALE AFB (KBAB)

**⚠** \* When ALS inop, increase CAT AB RVR to 55 and vis to 1 mile, CAT CDE vis to 1 1/4 miles.  
 \*\* Circling not authorized E of Rwy 15-33.

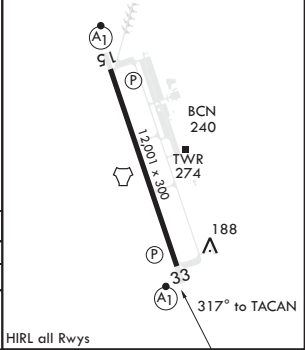
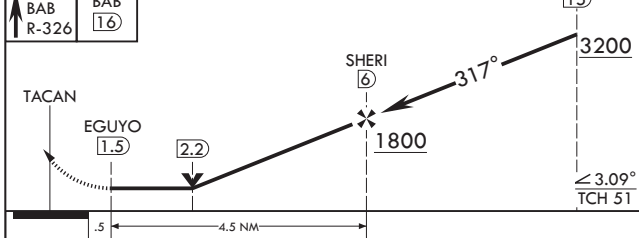


MISSED APPROACH: Climb to 3600 intercept BAB TACAN R-326 to HAPAK and hold.

ATIS* 124.55 273.5	NORCAL APP CON 125.4 259.1	TOWER* 119.4 284.75	GND CON 121.6 257.75
-----------------------	-------------------------------	------------------------	-------------------------



3600 BAB R-326	HAPAK BAB 16	COLSO 15	ELEV 113	TDZE 105
----------------------	--------------------	-------------	----------	----------



CATEGORY	A	B	C	D	E
S-33*	540/24 435 (500-1/2)		540/40 435		(500-3/4)
<b>C</b> CIRCLING**	600-1 487 (500-1)		600-1 1/2 487 (500-1 1/2)	680-2 567 (600-2)	840-2 1/2 727 (800-2 1/2)

HIRL all Rwys

MARYSVILLE, CALIFORNIA

39°08'N - 121°26'W

BEALE AFB (KBAB)

Amdt 5 20JUL17

# TACAN Y RWY 33

SW-2, 04 NOV 2021 to 02 DEC 2021

SW-2, 04 NOV 2021 to 02 DEC 2021