

MARYSVILLE, CALIFORNIA

HI-ILS or LOC Z RWY 15

LOC I-BAB 109.5	APCH CRS 145°	Rwy ldg 12,001	TDZE 113	Arpt Elev 113
---------------------------	-------------------------	-------------------	-------------	------------------

JAL-771 (USAF)

BEALE AFB (KBAB)

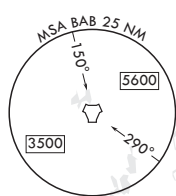
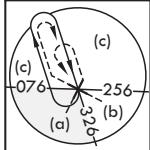
* When ALS inop, increase CAT CDE RVR to 40 and vis to 3/4 mile.
 ** When ALS inop, increase CAT CDE vis to 1 3/8 miles.
 *** Circling not authorized E of Rwy 15-33.

ALSF-1



MISSED APPROACH: Climb to 4400 direct to BAB
 TACAN. Turn right to intercept BAB R-326 to HAPAK
 and hold, continue climb in hold to 4400.

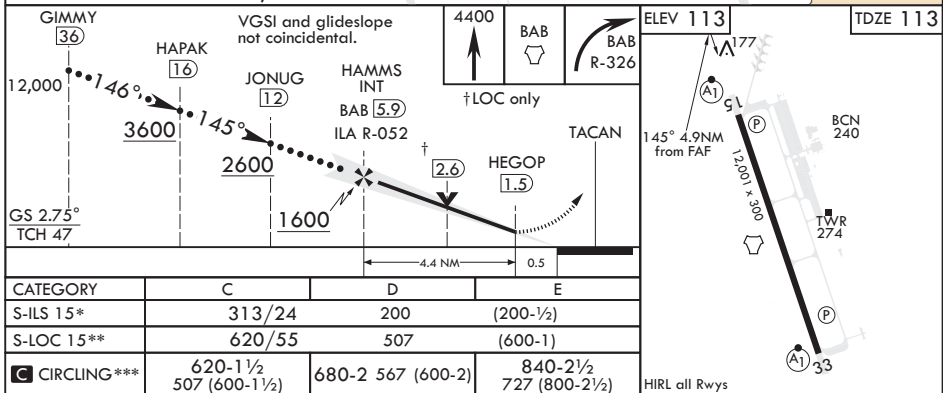
ATIS* 124.55 273.5	NORCAL APP CON 125.4 259.1	TOWER* 119.4 284.75	GND CON 121.6 257.75
------------------------------	--------------------------------------	-------------------------------	--------------------------------



RADAR or DME REQUIRED

WILLIAMS
 114.4 ILA
 Chan 91

EMERG SAFE ALT 100 NM 13,700



CATEGORY	C	D	E
S-ILS 15*	313/24	200	(200-1/2)
S-LOC 15**	620/55	507	(600-1)
C CIRCLING***	620-1 1/2 507 (600-1 1/2)	680-2 567 (600-2)	840-2 1/2 727 (800-2 1/2)

MARYSVILLE, CALIFORNIA

39°08'N - 121°26'W

BEALE AFB (KBAB)

Amdt 5 20JUL17

HI-ILS or LOC Z RWY 15

SW-2, 04 NOV 2021 to 02 DEC 2021

SW-2, 04 NOV 2021 to 02 DEC 2021