

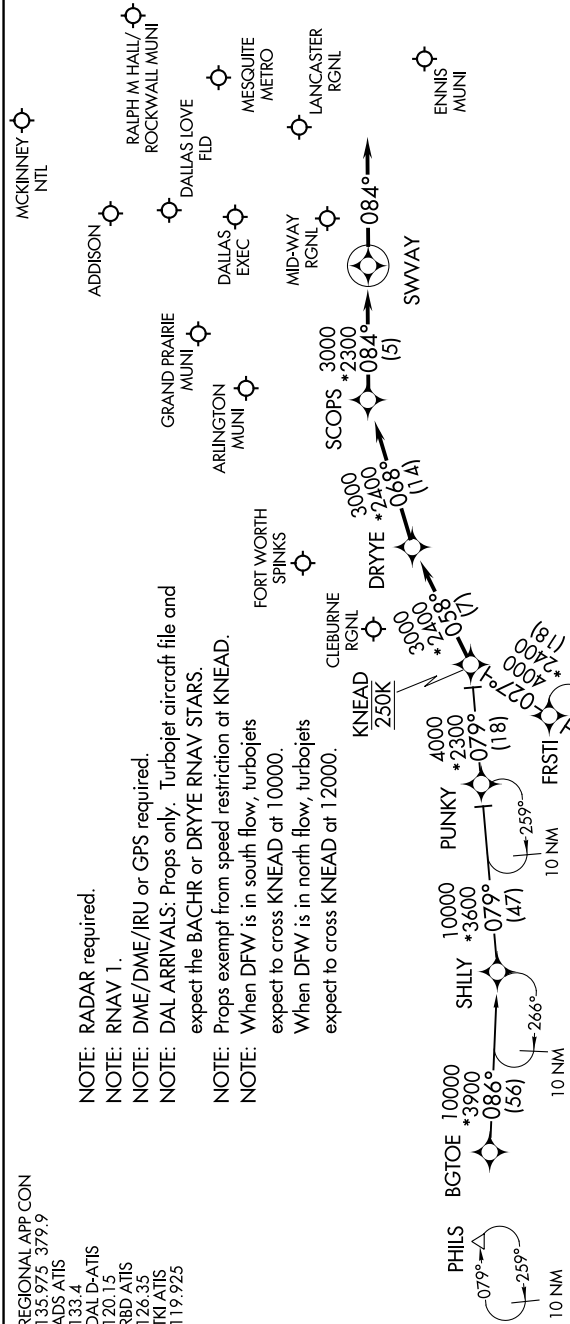
# SWVAY FOUR ARRIVAL (RNAV)

DALLAS, TEXAS

SC-2, 04 NOV 2021 to 02 DEC 2021

REGIONAL APP CON  
 135.975 379.9  
 ADS ATIS  
 133.4  
 DAL D-ATIS  
 120.15  
 RBD ATIS  
 126.35  
 TKI ATIS  
 119.925

- NOTE: RADAR required.
- NOTE: RNAV 1.
- NOTE: DME/DME/IRU or GPS required.
- NOTE: DAL ARRIVALS: Props only. Turbojet aircraft file and expect the BACHR or DRYEE RNAV STARS.
- NOTE: Props exempt from speed restriction at KNEAD.
- NOTE: When DFW is in south flow, turbojets expect to cross KNEAD at 10000.
- NOTE: When DFW is in north flow, turbojets expect to cross KNEAD at 12000.



## ARRIVAL ROUTE DESCRIPTION

- BGTOE TRANSITION (BGTOE.SWVAY4)
- DITSY TRANSITION (DITSY.SWVAY4)
- FRSTI TRANSITION (FRSTI.SWVAY4): (For ACT and GRK Terminal Area departures only).
- SHILLY TRANSITION (SHILLY.SWVAY4): (For ABI Terminal Area departures only).

From KNEAD on track 058° to DRYEE, then on track 068° to SCOPS, then on track 084° to SWVAY, then on track 084°.

Expect RADAR vectors to final approach course.

NOTE: Chart not to scale.

# SWVAY FOUR ARRIVAL (RNAV)

(KNEAD.SWVAY4) 26MAY16

DALLAS, TEXAS

SC-2, 04 NOV 2021 to 02 DEC 2021