

JOE POOL THREE DEPARTURE

TAKEOFF MINIMUMS

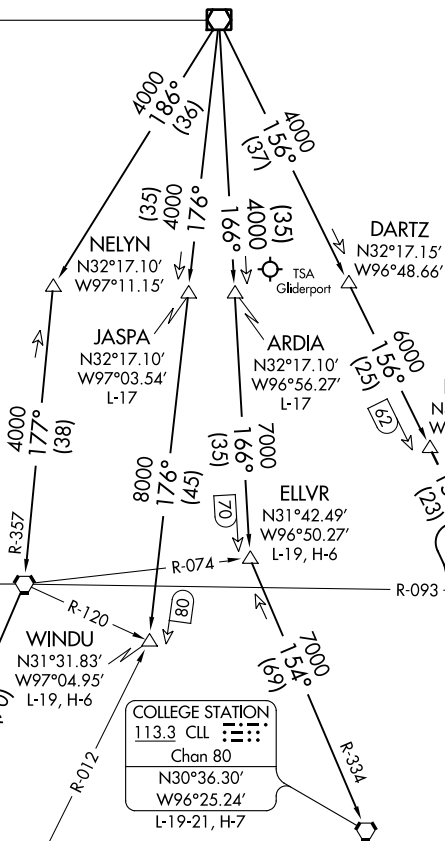
Rwy 33: Standard.

Rwy 15: 400-2½ or standard with minimum climb of 325' per NM to 1100.

ATIS 133.4
 CLNC DEL 119.55
 GND CON 121.6
 ADDISON TOWER * 126.0 (CTAF) 239.0
 REGIONAL DEP CON 124.3 282.275

MAVERICK
 113.1 TTT
 Chan 78
 N32°52.15'
 W97°02.43'

WACO
 115.3 ACT
 Chan 100
 N31°39.73'
 W97°16.14'
 L-19, H-6



WINDU
 N31°31.83'
 W97°04.95'
 L-19, H-6

COLLEGE STATION
 113.3 CLL
 Chan 80
 N30°36.30'
 W96°25.24'
 L-19-21, H-7

HOARY
 N30°34.63'
 W97°46.52'
 L-19-21, H-7

CENTEX
 112.8 CWK
 Chan 75

SAN ANTONIO
 116.8 SAT
 Chan 115
 N29°38.64'-W98°27.68'
 L-19, H-7

NAVASOTA
 115.9 TNV
 Chan 106

NOTE: RADAR and DME required.

(NARRATIVE ON FOLLOWING PAGE)

NOTE: Chart not to scale.

SC-2, 04 NOV 2021 to 02 DEC 2021

SC-2, 04 NOV 2021 to 02 DEC 2021

JOE POOL THREE DEPARTURE