

LOC/DME I-TBQ 110.1 Chan 38	APP CRS 335°	Rwy Idg 6431 TDZE 644 Apt Elev 644
-------------------------------------------------	------------------------	---------------------------------------------------------------

ILS or LOC RWY 33

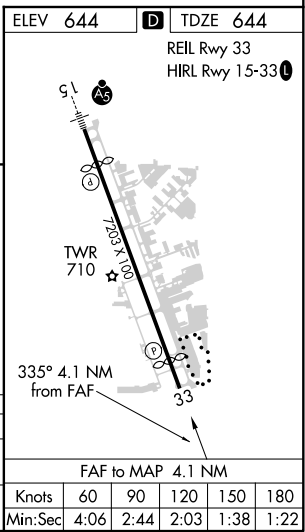
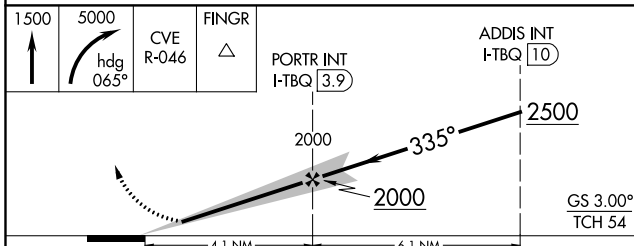
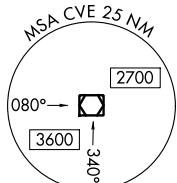
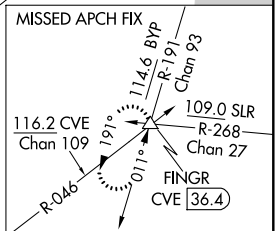
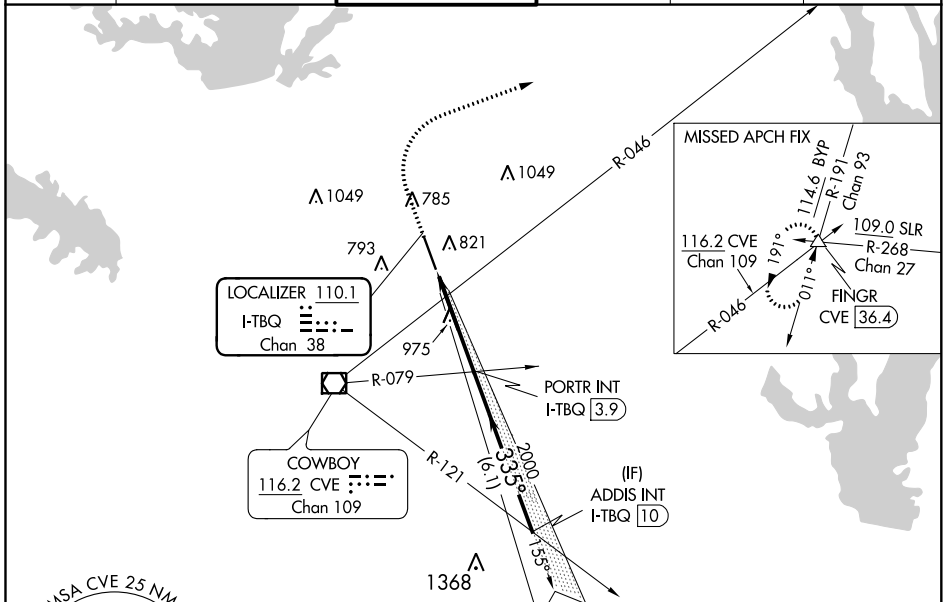
ADDISON (ADS)

RADAR required for procedure entry.

▼ Rwy 33 helicopter visibility reduction below ¼ SM NA. When local altimeter setting not received, use Dallas Love Fld altimeter setting and increase all DA 39 feet and MDA 40 feet, increase S-LOC 33 Cat C/D visibility ¼ SM.

MISSED APPROACH: Climb to 1500 then climbing right turn to 5000 via heading 065° and CVE VOR/DME R-046 to FINGR INT/CVE 36.4 DME and hold.

ATIS 133.4	REGIONAL APP CON 124.3 282.275	ADDISON TOWER * 126.0 (CTAF) 0 239.0	GND CON 121.6	CLNC DEL 119.55	UNICOM 122.95
----------------------	------------------------------------------	------------------------------------------------	-------------------------	---------------------------	-------------------------



CATEGORY	A	B	C	D
S-ILS 33	894-1 250 (300-1)			
S-LOC 33	1240-1 596 (600-1)	1240-1½ 596 (600-1½)	1240-1¾ 596 (600-1¾)	

Knots	60	90	120	150	180
Min:Sec	4:06	2:44	2:03	1:38	1:22

SC-2, 04 NOV 2021 to 02 DEC 2021

SC-2, 04 NOV 2021 to 02 DEC 2021