

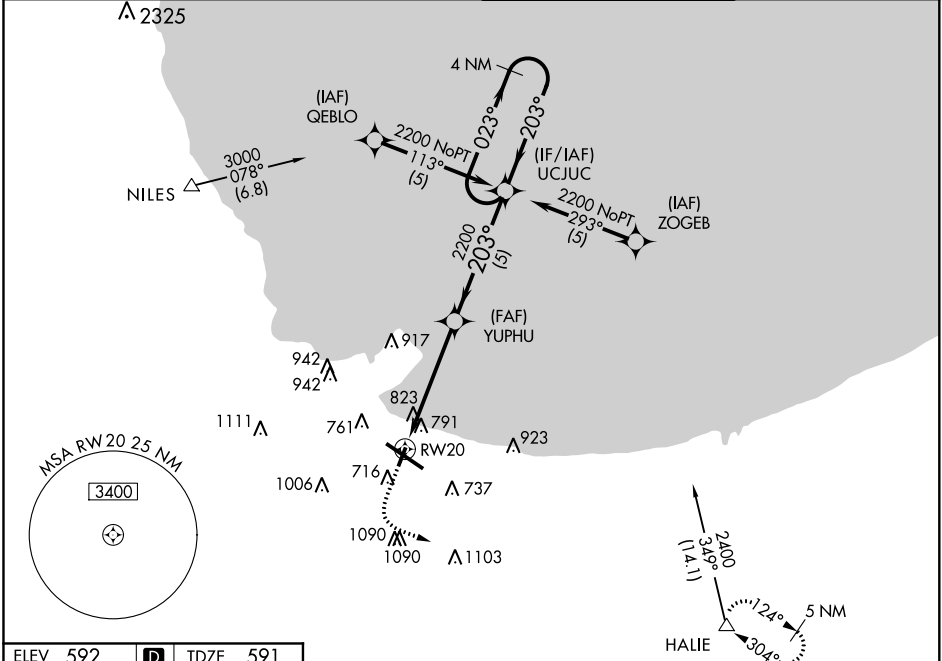
APP CRS 203°	Rwy Idg 3604
	TDZE 591
	Apt Elev 592

RNAV (GPS) RWY 20

GARY/CHICAGO INTL (GYY)

<p>▽ GPS or RNP-0.3 required.</p> <p>▲ NA DME/DME RNP-0.3 NA.</p>	<p>MISSED APPROACH: Climb to 1500 then climbing left turn to 2400 direct HALIE WP and hold.</p>
---	---

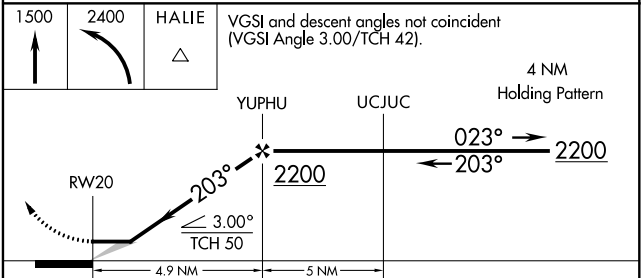
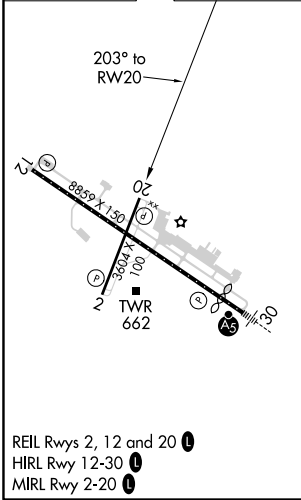
<p>ATIS 134.575</p>	<p>CHICAGO APP CON 133.1 285.6</p>	<p>GARY TOWER ★ 125.6 (CTAF) 1</p>	<p>GND CON 121.9</p>
--------------------------------	---	---	---------------------------------



EC-2, 04 NOV 2021 to 02 DEC 2021

EC-2, 04 NOV 2021 to 02 DEC 2021

ELEV 592	D	TDZE 591
----------	----------	----------



CATEGORY	A	B	C	D
GLS PA DA	NA			
LNAV/VNAV DA	NA			
LNAV MDA	1080-1 489 (500-1)	1080-1¼ 489 (500-1¼)	1080-1½ 489 (500-1½)	1080-1½ 489 (500-1½)
CIRCLING	1140-1 548 (600-1)	1180-1½ 588 (600-1½)	1180-2 588 (600-2)	1180-2 588 (600-2)

GARY, INDIANA
Orig 25JAN01

41°37'N - 87°25'W

GARY/CHICAGO INTL (GYY) RNAV (GPS) RWY 20