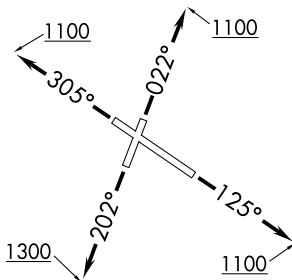


# BLOKR SIX DEPARTURE (RNAV)

ATIS  
134.575  
GND CON  
121.9  
GARY TOWER ★  
125.6  
CHICAGO DEP CON  
133.1 285.6

**TOP ALTITUDE:  
3000**



### TAKEOFF MINIMUMS:

Rwys 12, 20, 30: Standard.  
Rwy 2: Standard with minimum climb of 323' per NM to 900.

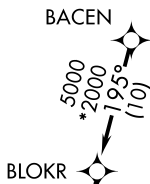
NOTE: RADAR required.

NOTE: DME/DME/IRU or GPS required.

NOTE: RNAV 1.

NOTE: Turbojet departures maintain 250K until advised by ATC.

NOTE: ROBERTS TRANSITION: For aircraft inbound to CMI or STL, or as assigned by ATC.



BLOKR

BACEN



### DEPARTURE ROUTE DESCRIPTION

TAKEOFF RUNWAY 2: Climb heading 022° to 1100, then as assigned by ATC, for vectors to BACEN. Thence. . .

TAKEOFF RUNWAY 12: Climb heading 125° to 1100, then as assigned by ATC, for vectors to BACEN. Thence. . .

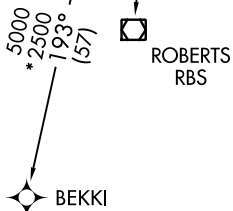
TAKEOFF RUNWAY 20: Climb heading 202° to 1300, then as assigned by ATC, for vectors to BACEN. Thence. . .

TAKEOFF RUNWAY 30: Climb heading 305° to 1100, then as assigned by ATC, for vectors to BACEN. Thence. . .

. . . on track 195° to BLOKR, then on (transition). Maintain 3000. Expect filed altitude 10 minutes after departure.

BEKKI TRANSITION (BLOKR6.BEKKI):

ROBERTS TRANSITION (BLOKR6.RBS):



NOTE: Chart not to scale.

EC-2, 04 NOV 2021 to 02 DEC 2021

EC-2, 04 NOV 2021 to 02 DEC 2021

# BLOKR SIX DEPARTURE (RNAV)

(BLOKR6.BLOKR) 10OCT19

GARY, INDIANA  
GARY/CHICAGO INTL (GYY)