

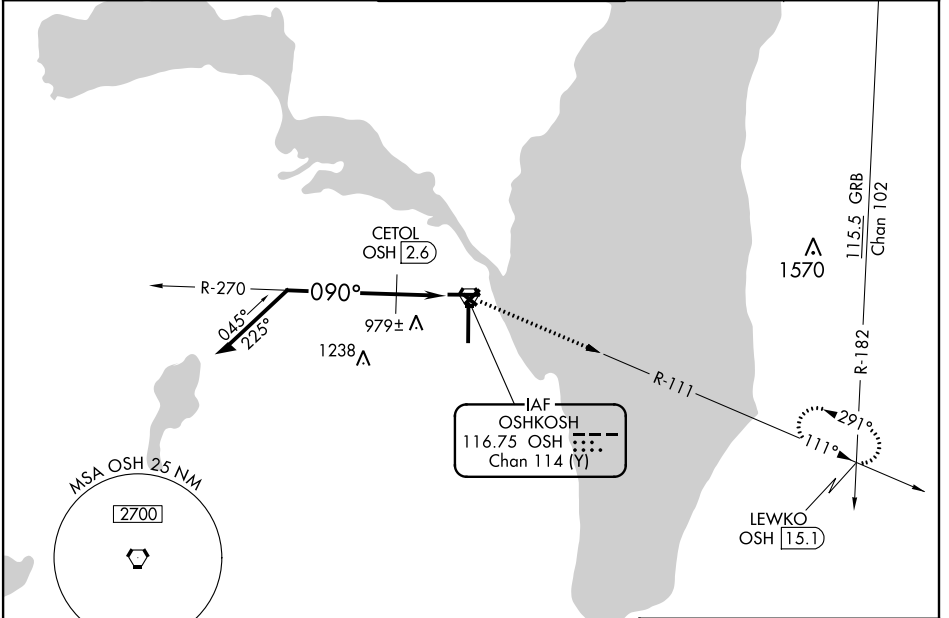
VORTAC OSH 116.75 Chan 114 (Y)	APP CRS 090°	Rwy Idg 5648 TDZE 797 Apt Elev 808
--	------------------------	---

VOR RWY 9
WITTMAN RGNL (OSH)

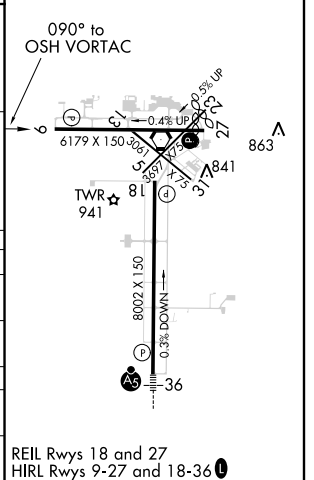
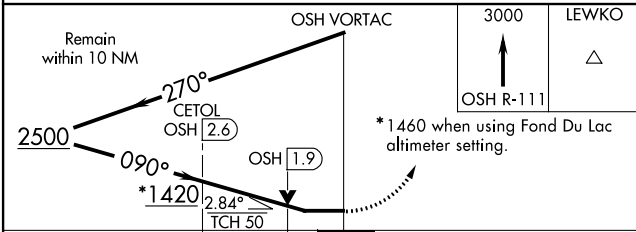
⚠ Circling to Rwy 5, 23, and 31 NA at night. When local altimeter setting not received, use Fond Du Lac altimeter setting and increase all MDA 40 feet and increase S-9 Cats C and D visibility and Circling Cat C visibility 1/8 mile and Circling Cat D visibility 1/4 mile, increase CETOL fix minimums Circling Cat D visibility 1/4 mile. VDP NA with Fond Du Lac altimeter setting. Helicopter visibility reduction below 3/4 SM NA.

MISSED APPROACH: Climb to 3000 on OSH VORTAC R-111 to LEWKO INT/OSH 15.1 DME and hold.

ATIS 125.9	MILWAUKEE APP CON 127.0 263.075	OSHKOSH TOWER ★ 118.5 (CTAF) 290.9	GND CON 132.3	UNICOM 122.95
----------------------	---	--	-------------------------	-------------------------



ELEV 808	D	TDZE 797
----------	----------	----------



CATEGORY	A	B	C	D
S-9	1420-1	623 (700-1)	1420-1 3/4	623 (700-1 3/4)
C CIRCLING	1420-1	612 (700-1)	1420-1 3/4	1440-2
			612 (700-1 3/4)	632 (700-2)
CETOL FIX MINIMUMS				
S-9	1240-1	443 (500-1)	1240-1 3/8	443 (500-1 3/8)
C CIRCLING	1280-1	1300-1	1360-1 1/2	1440-2
	472 (500-1)	492 (500-1)	552 (600-1 1/2)	632 (700-2)

EC-3, 04 NOV 2021 to 02 DEC 2021

EC-3, 04 NOV 2021 to 02 DEC 2021