

| | | |
|---------------------------|------------------------|------------------------|
| LOC I-OSH 110.5 | APP CRS 004° | Rwy Idg 8002 |
| | | TDZE 808 |
| | | Apt Elev 808 |

ILS or LOC RWY 36

WITTMAN RGNL (OSH)

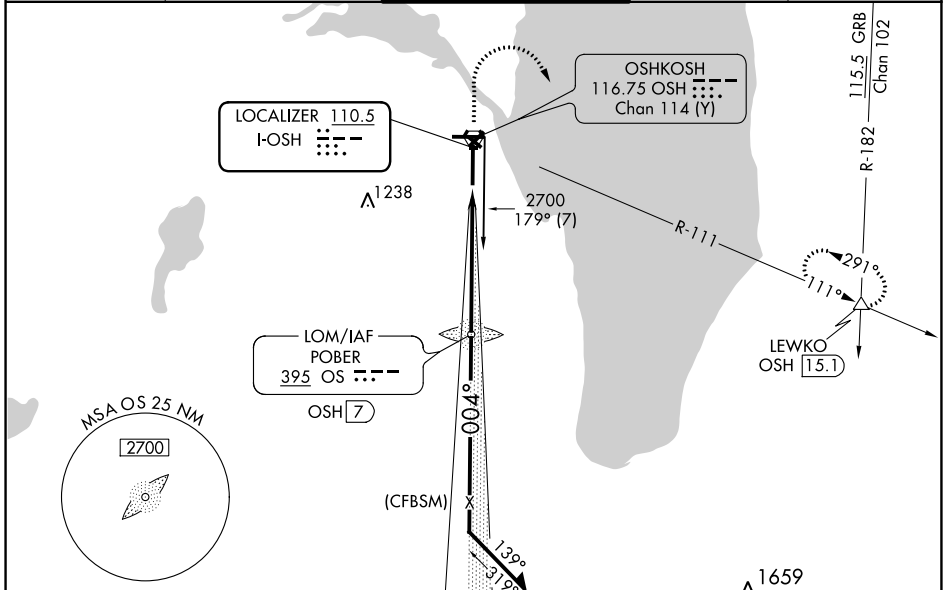
⚠ When local altimeter setting not received, use Fond Du Lac altimeter setting and increase DA 31 feet and all MDA 40 feet; increase S-LOC 36 Cat C/D and Circling Cat C/D visibilities ¼ mile. For inop MALSRL when using Fond Du Lac altimeter setting, increase S-LOC 36 Cat C/D visibility to 1½ mile. Circling to Rwy 5, 23, and 31 NA at night.
***** RVR 1800 authorized with the use of FD or AP or HUD to DA, NA when using Fond Du Lac altimeter setting.

MALSRL

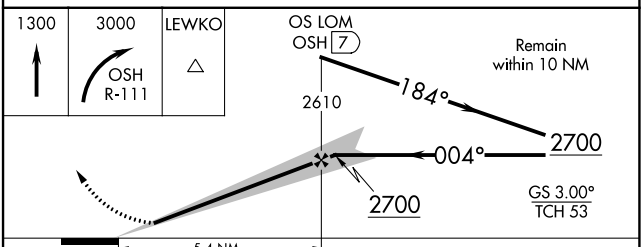
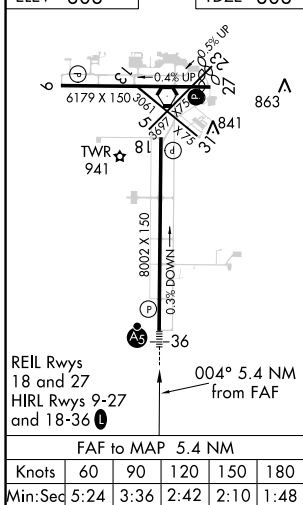


MISSED APPROACH: Climb to 1300 then climbing right turn to 3000 on OSH R-111 to LEWKO INT/OSH 15 DME and hold.

| | | | | |
|----------------------|---|--|-------------------------|-------------------------|
| ATIS 125.9 | MILWAUKEE APP CON 127.0 263.075 | OSHKOSH TOWER ★ 118.5 (CTAF) 290.9 | GND CON 132.3 | UNICOM 122.95 |
|----------------------|---|--|-------------------------|-------------------------|



| | |
|----------|----------|
| ELEV 808 | TDZE 808 |
|----------|----------|



| CATEGORY | A | B | C | D |
|-------------------|---------------------|-------------|------------------------|-----------------------|
| S-ILS 36 * | 1008/24 200 (200-½) | | | |
| S-LOC 36 | 1340/24 | 532 (600-½) | 1340/55 | 532 (600-1) |
| C CIRCLING | 1340-1 | 532 (600-1) | 1360-1½ 552 (600-½) | 1440-2 632 (700-2) |

EC-3, 04 NOV 2021 to 02 DEC 2021

EC-3, 04 NOV 2021 to 02 DEC 2021