

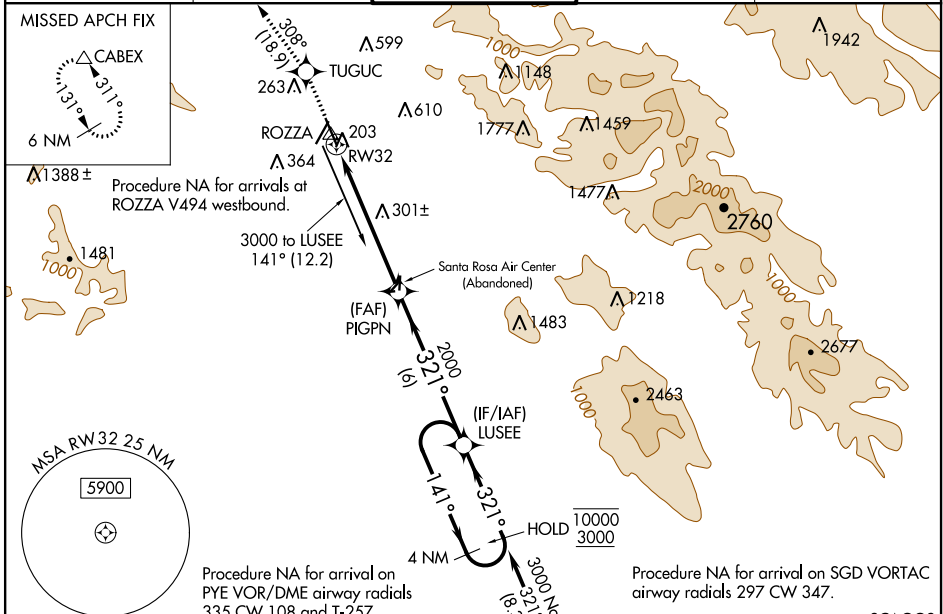
WAAS CH 72611 W32A	APP CRS 321°	Rwy Idg TDZE Apt Elev	6000 122 129
--	------------------------	-----------------------------	---

RNAV (GPS) RWY 32

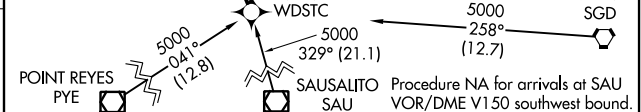
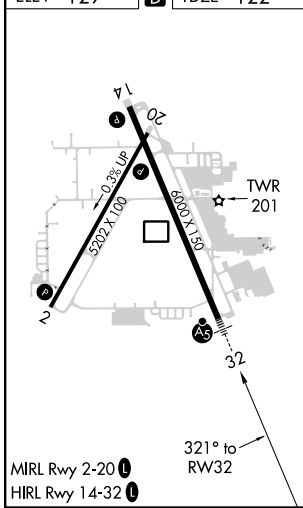
CHARLES M SCHULZ-SONOMA COUNTY (STS)

RNP APCH-GPS.	MALSRL 	MISSED APPROACH: Climb to 6000 direct TUGUC and on track 308° to CABEX and hold, continue climb-in-hold to 6000.
For uncorrected Baro-VNAV systems, LNAV/VNAV NA below -4°C or above 54°C. #RVR 1800 authorized with use of FD or AP or HUD to DA.		

ATIS 120.55	OAKLAND CENTER 127.8 353.5	SANTA ROSA TOWER* 118.5 (CTAF) 0 363.0	GND CON 121.9	UNICOM 122.95
-----------------------	--------------------------------------	--	-------------------------	-------------------------



ELEV 129	D	TDZE 122
----------	----------	----------



6000	TUGUC	CABEX	LUSEE	
↑		tr 308°		
*LNAV only.				
*1.2 NM to RW32		PIGNP		
1.2		4.5 NM		6 NM
CATEGORY	A	B	C	D
LPV DA#	322/24 200 (200-½)			
LNAV/VNAV DA	570/50 448 (500-1)			
LNAV MDA	560/24 438 (500-½)		560/40 438 (500-¾)	
C CIRCLING	600-1		1080-3	
	471 (500-1)		951 (1000-3)	
	680-1		1420-3	
	551 (600-1)		1291 (1300-3)	

SW-2, 04 NOV 2021 to 02 DEC 2021

SW-2, 04 NOV 2021 to 02 DEC 2021