

(SUNOL1.SUNOL) 20310
SUNOL ONE DEPARTURE

NORMAN Y MINETA SAN JOSE INTL (SJC)
 SAN JOSE, CALIFORNIA

AL-693 (FAA)

D-ATIS
 126.95
 CLNC DEL
 118.0
 CPDLC
 GND CON
 121.7
 SAN JOSE TOWER*
 124.0 257.6
 NORCAL DEP CON
 121.3 270.35

SACRAMENTO
 115.2 SAC
 Chan 99
 N38°26.62'-W121°33.10'
 L-2-3, H-3

**TOP ALTITUDE:
 ASSIGNED BY ATC**

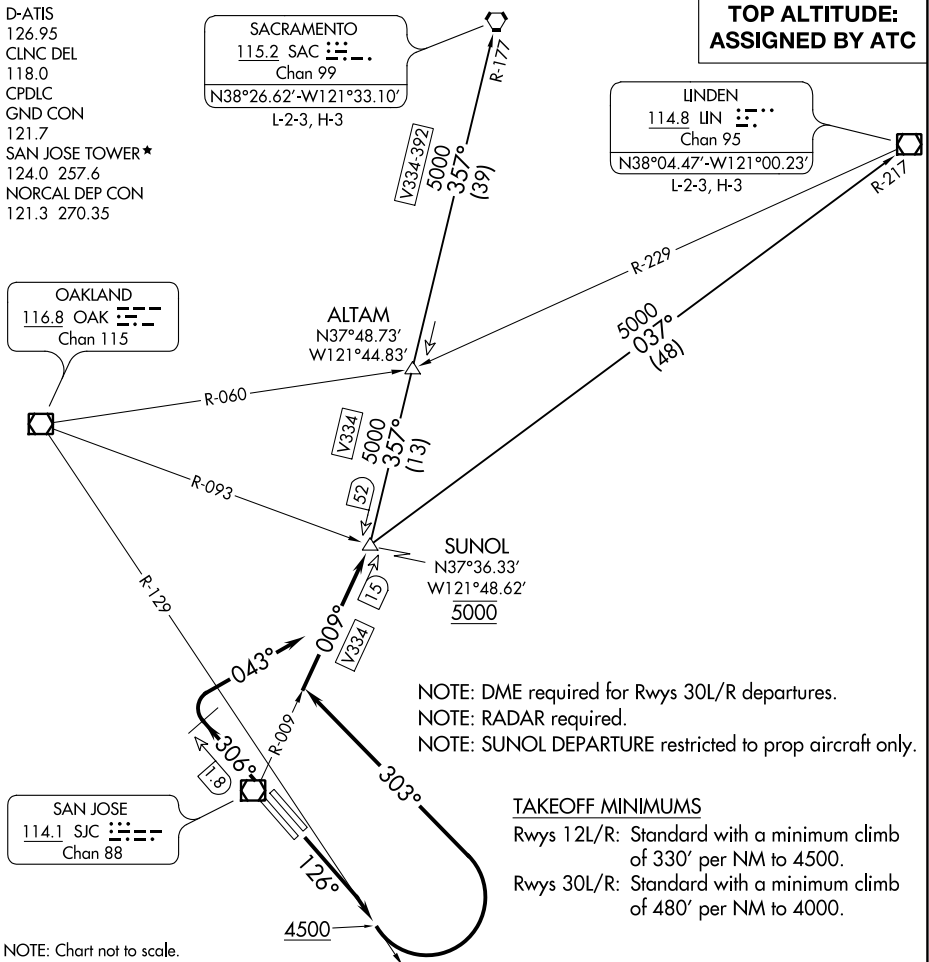
LINDEN
 114.8 LIN
 Chan 95
 N38°04.47'-W121°00.23'
 L-2-3, H-3

OAKLAND
 116.8 OAK
 Chan 115

ALTAM
 N37°48.73'
 W121°44.83'

SUNOL
 N37°36.33'
 W121°48.62'
 5000

SAN JOSE
 114.1 SJC
 Chan 88



NOTE: DME required for Rwy 30L/R departures.
 NOTE: RADAR required.
 NOTE: SUNOL DEPARTURE restricted to prop aircraft only.

TAKEOFF MINIMUMS

Rwys 12L/R: Standard with a minimum climb of 330' per NM to 4500.
 Rwys 30L/R: Standard with a minimum climb of 480' per NM to 4000.

NOTE: Chart not to scale.

DEPARTURE ROUTE DESCRIPTION

TAKEOFF RUNWAYS 12L/R: Climb heading 126° to intercept and proceed on OAK R-129 to 4500, then turn left heading 303° for RADAR vectors to intercept and proceed on SJC R-009 to cross SUNOL at 5000, thence

TAKEOFF RUNWAYS 30L/R: Climb heading 306° at SJC 1.8 DME northwest of SJC VOR/DME, turn right heading 043° to intercept and proceed on SJC R-009 to cross SUNOL at 5000, thence

. . . . then on (transition) or (assigned route). Maintain ATC assigned altitude.

LINDEN TRANSITION (SUNOL1.LIN): From over SUNOL on LIN R-217 to LIN VOR/DME.

SACRAMENTO TRANSITION (SUNOL1.SAC): From over SUNOL on SAC R-177 to SAC VORTAC.