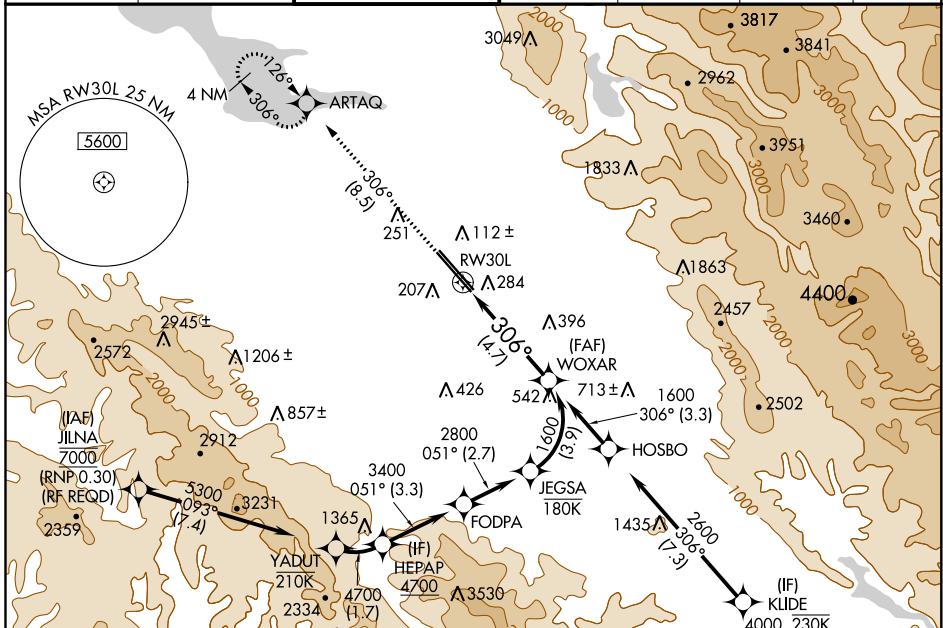


APP CRS	Rwy Idg	7614
306°	TDZE	57
	Apt Elev	62

RNAV (RNP) Z RWY 30L

NORMAN Y MINETA SAN JOSE INTL (SJC)

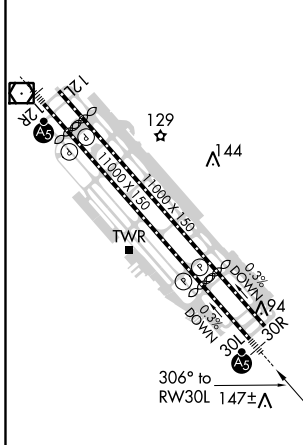
RNP AR APCH.			MALSR		MISSED APPROACH: Climb to 2000 on track 306° to ARTAQ and hold.	
▽ For uncompensated Baro-VNAV systems, procedure NA below 1°C or above 54°C. For inoperative ALS, increase RNP 0.10 all Cats visibility to RVR 5500 and increase RNP 0.30 all Cats visibility to 1½ SM.						
D-ATIS	NORCAL APP CON	SAN JOSE TOWER ★	GND CON	CLNC DEL	CPDLC	UNICOM
126.95	120.1 290.25	124.0 (CTAF) 257.6	121.7	118.0		122.95



SW-2, 04 NOV 2021 to 02 DEC 2021

SW-2, 04 NOV 2021 to 02 DEC 2021

ELEV	62	D	TDZE	57
------	-----------	---	------	-----------



2000	ARTAQ	VGSI and RNAV glidepath not coincident (VGSI Angle 3.00/TCH 70).	WOXAR
tr 306°			1600
See planview for multiple IF locations.			
RW30L		306°	1600
		4.7 NM	GP 3.00° TCH 54

CATEGORY	A	B	C	D
RNP 0.10 DA		430/35	373 (400-5%)	
RNP 0.20 DA		464/40	407 (500-3%)	
RNP 0.30 DA		541/50	484 (500-1)	

REIL Rwy 12L
HIRL Rwy 12L-30R and 12R-30L