

APP CRS	Rwy Idg	<b>8587</b>
<b>126°</b>	TDZE	<b>46</b>
	Apt Elev	<b>62</b>

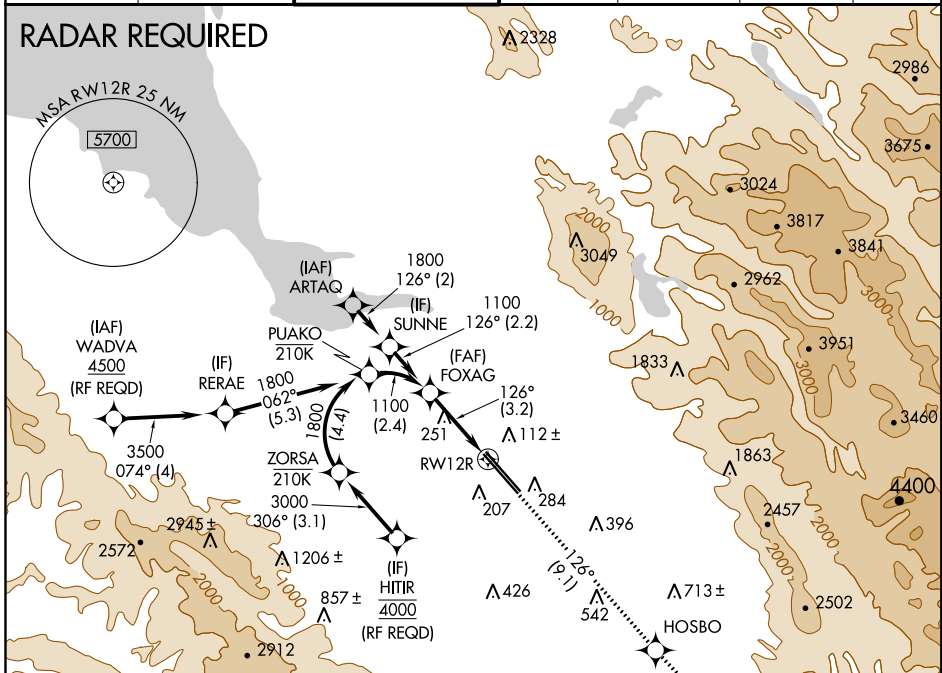
# RNAV (RNP) Z RWY 12R

NORMAN Y MINETA SAN JOSE INTL (SJC)

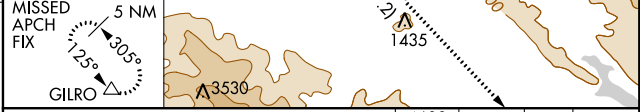
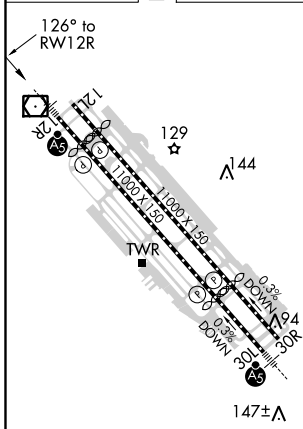
For uncompensated Baro-VNAV systems, procedure NA below 0°C (32°F) or above 54°C (130°F). GPS required.	MALSR	MISSED APPROACH: Climb to 4600 on track 126° to HOSBO and on track 124° to GILRO and hold.

D-ATIS <b>126.95</b>	NORCAL APP CON <b>120.1 290.25</b>	SAN JOSE TOWER* <b>124.0 (CTAF) 0 257.6</b>	GND CON <b>121.7</b>	CLNC DEL <b>118.0</b>	CPDLC	UNICOM <b>122.95</b>
-------------------------	---------------------------------------	--	-------------------------	--------------------------	-------	-------------------------

## RADAR REQUIRED



ELEV 62	<b>D</b>	TDZE 46
---------	----------	---------



FOXAG	VGSI and RNAV glidepath not coincident (VGSI Angle 3.00/TCH 75).	4600 tr 126°	HOSBO tr 124°	GILRO tr 124°
GP 3.00° TCH 58 See planview for multiple IF locations.				

CATEGORY	A	B	C	D
RNP 0.15 DA		380-5/8	334 (400-5/8)	
RNP 0.30 DA		486-1	440 (500-1)	

REIL Rwy 12L  
HIRL Rwy 12L-30R and 12R-30L

## AUTHORIZATION REQUIRED

SW-2, 04 NOV 2021 to 02 DEC 2021

SW-2, 04 NOV 2021 to 02 DEC 2021