

# RNAV (RNP) Z RWY 36R


AUSTIN-BERGSTROM INTL (AUS)

APP CRS	Rwy ldg	<b>9000</b>
<b>355°</b>	TDZE	<b>480</b>
	Apt Elev	<b>542</b>

RNP AR APCH. RADAR required.

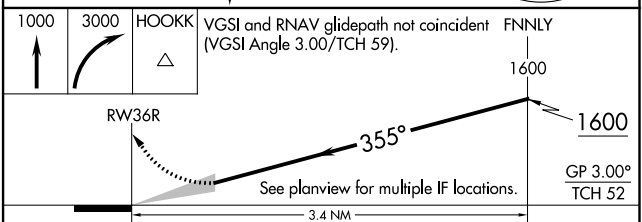
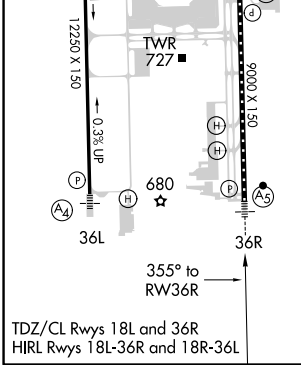
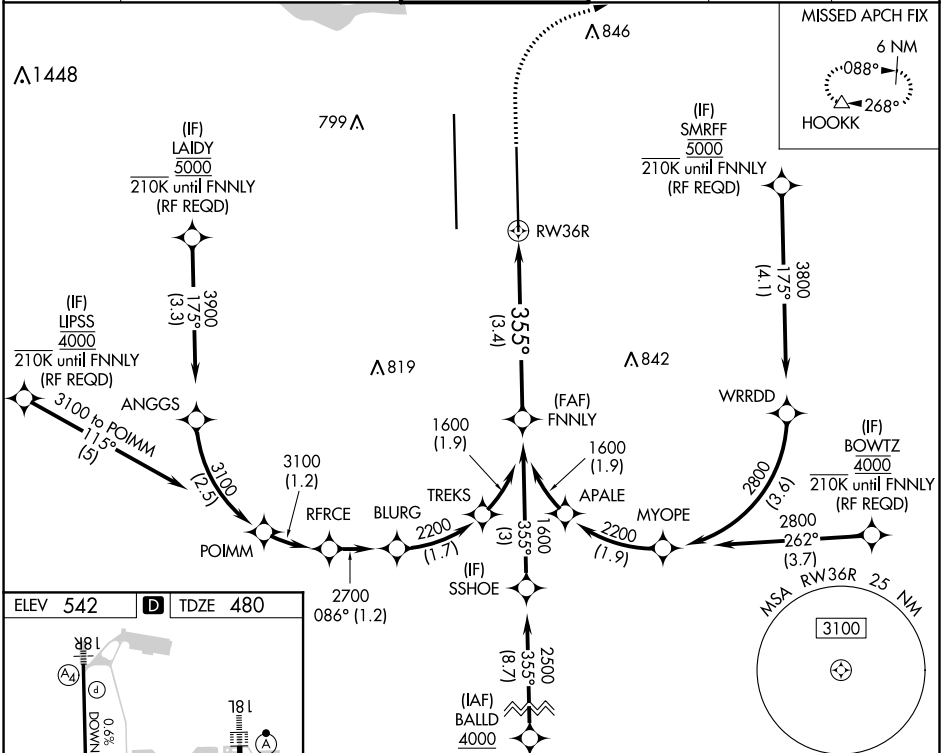
Simultaneous approach authorized. For uncompensated Baro-VNAV systems, procedure NA below -5°C or above 54°C. For inop ALS, increase RNP 0.11 all Cats visibility to RVR 4500, RNP 0.16 all Cats visibility to RVR 6000, and RNP 0.30 all Cats visibility to 1/4 SM.

MALSR



MISSED APPROACH: Climb to 1000 then climbing right turn to 3000 direct HOOKK and hold.

D-ATIS	AUSTIN APP CON	AUSTIN TOWER	GND CON	CLNC DEL	CPDLC
<b>124.4</b>	<b>127.225 317.65</b> (EAST) <b>120.875 270.25</b> (SOUTH) <b>119.0 370.85</b> (WEST)	<b>121.0 281.5</b>	<b>121.9 348.6</b>	<b>125.5 263.0</b>	



CATEGORY	A	B	C	D
RNP 0.11 DA		744/24	264 (300-1/2)	
RNP 0.16 DA		862/35	382 (400-3/8)	
RNP 0.30 DA		915/40	435 (400-3/4)	

**AUTHORIZATION REQUIRED**

SC-3, 04 NOV 2021 to 02 DEC 2021

SC-3, 04 NOV 2021 to 02 DEC 2021