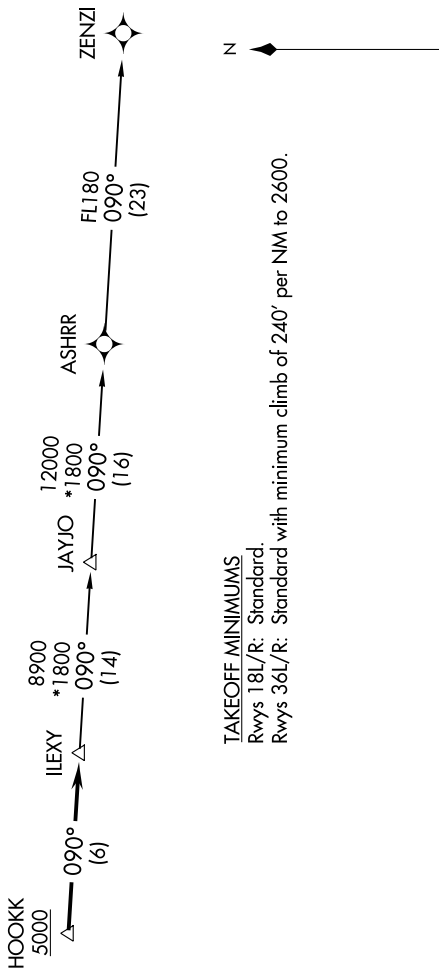


SC-3, 04 NOV 2021 to 02 DEC 2021

**TOP ALTITUDE:
ASSIGNED BY ATC**

- D-ATIS 124.4
- CINC DEL 125.5 263.0
- CPDIC
- GND CON 121.9 348.6
- AUSTIN TOWER 121.0 281.5
- AUSTIN DEP CON 127.225 317.65

- NOTE: RADAR required.
- NOTE: DME/DME/IRU or GPS required.
- NOTE: RNAV 1.
- NOTE: Houston terminal area arrivals expect routing from ILEXY.
- NOTE: JAYJO transition to join V306 only.



DEPARTURE ROUTE DESCRIPTION

TAKEOFF RUNWAYS 18L/R: Climb on heading 175° or as assigned by ATC for vectors to cross HOOKK at or above 5000, thence. . . .

TAKEOFF RUNWAYS 36L/R: Climb on heading 355° or as assigned by ATC for vectors to cross HOOKK at or above 5000, thence. . . .

. . . on track 090° to ILEXY, then on transition. Maintain altitude assigned by ATC. Expect filed altitude 10 minutes after departure.

JAYJO TRANSITION (ILEXY3.JAYJO)
ZENZI TRANSITION (ILEXY3.ZENZI)

SC-3, 04 NOV 2021 to 02 DEC 2021