

LOC/DME I-VNKG 110.5 Chan 42	APP CRS 175°	Rwy Idg 9000 TDZE 492 Apt Elev 542
--	------------------------	---

ILS or LOC RWY 18L

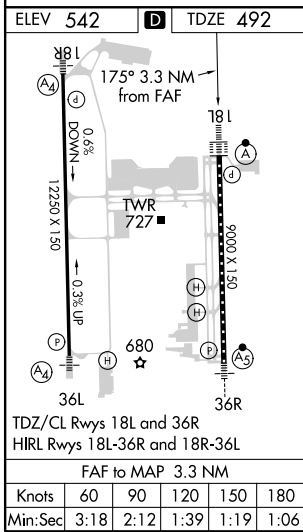
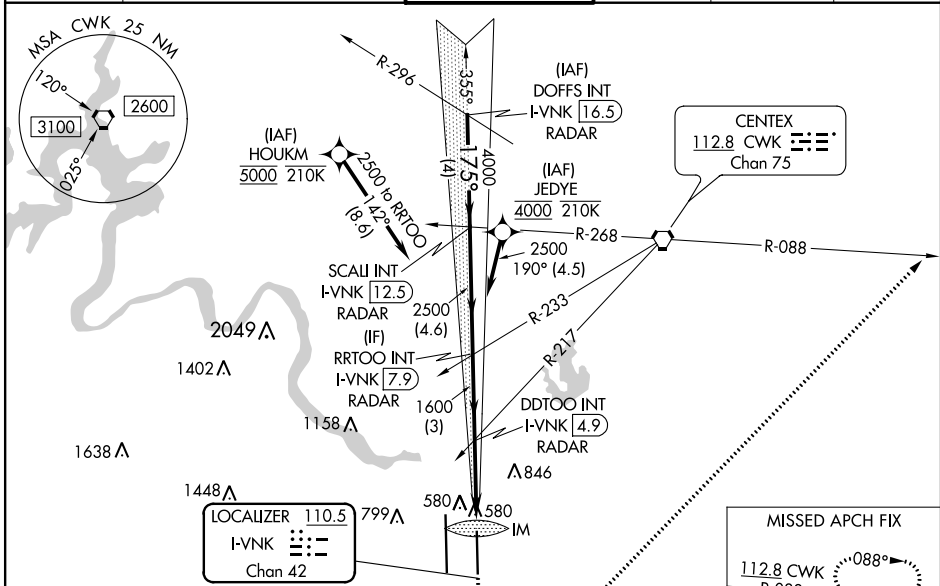
AUSTIN-BERGSTROM INTL (AUS)

RNAV 1-GPS or RADAR required for procedure entry. DME required. From HOUKM, JEDYE: RNAV 1-GPS required.

ALSIF-2

MISSED APPROACH: Climb to 1000, then climbing left turn to 3000 on heading 040° and CWK VORTAC R-088 to HOOKK/CWK 17 DME and hold.

D-ATIS 124.4	AUSTIN APP CON 127.225 317.65 (EAST) 120.875 270.25 (SOUTH) 119.0 370.85 (WEST)	AUSTIN TOWER 121.0 281.5	GND CON 121.9 348.6	CLNC DEL 125.5 263.0	CPDLC
------------------------	---	------------------------------------	-------------------------------	--------------------------------	-------



VGSI and ILS glidepath not coincident (VGSI Angle 3.00/TCH 74).

DOFFS INT I-VNKG 16.5 RADAR	SCALI INT I-VNKG 12.5 RADAR	RRTOO I-VNKG 7.9 RADAR	DDTOO I-VNKG 4.9 RADAR	I-VNKG 2.5	I-VNKG 1.6
5000	4000	2500	1600	1600	0.8 0.1
GS 3.00° TCH 61		↑ hdg 040°			
CATEGORY A		CATEGORY B		CATEGORY C	
S-ILS 18L		692/18 200 (200-½)			
S-LOC 18L		840/24 348 (300-½)		840/30 348 (300-¾)	
CIRCLING	1040-1	1100-1	1200-1¾	1200-2	1520-3
	498 (500-1)	558 (600-1)	658 (700-1¾)	658 (700-2)	978 (1000-3)

SC-3, 04 NOV 2021 to 02 DEC 2021

SC-3, 04 NOV 2021 to 02 DEC 2021