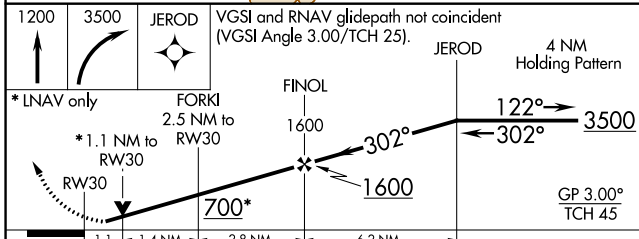
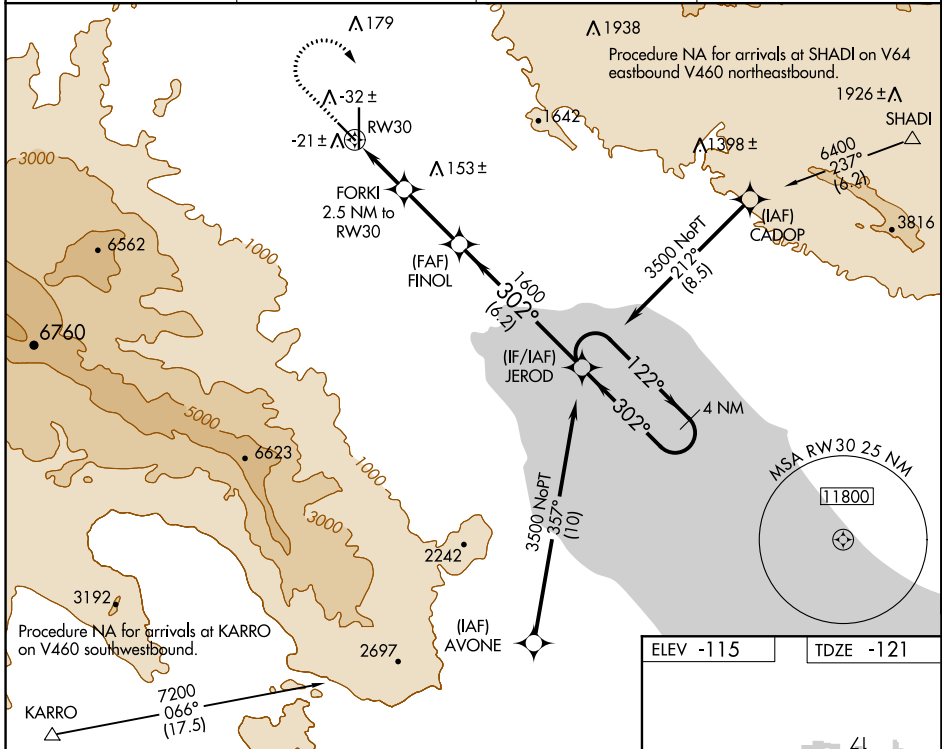


WAAS CH <b>77941</b> <b>W30A</b>	APP CRS <b>302°</b>	Rwy Idg TDZE Apt Elev	<b>4995</b> <b>-121</b> <b>-115</b>
--	------------------------	-----------------------------	---

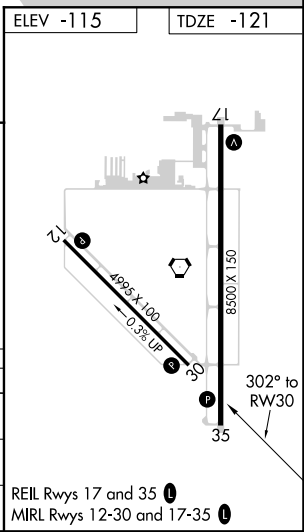
# RNAV (GPS) RWY 30

JACQUELINE COCHRAN RGNL (TRM)

RNP APCH. ▼ ▲ Rwy 30 helicopter visibility reduction below 3/4 SM NA.		MISSED APPROACH: (Do not exceed 230K until JEROD) Climb to 1200 then climbing right turn to 3500 direct JEROD and hold.	
ASOS <b>118.325</b>	SOCAL APP CON <b>135.275 251.1</b>	CLNC DEL <b>120.225</b>	UNICOM <b>123.0 (CTAF) 0</b>



1200	3500	JEROD	VGSI and RNAV glidepath not coincident (VGSI Angle 3.00/TCH 25).
* LNAV only		FORKI 2.5 NM to RW30	FINOL 1600
* 1.1 NM to RW30		122° → 3500	
700*		← 302°	
1.1		1.4 NM	
2.8 NM		6.2 NM	
CATEGORY	A	B	C
LPV DA	129-3/4 250 (300-3/4)		
LNAV MDA	260-1 381 (400-1)		260-1 381 (400-1 1/2)
CIRCLING	320-1 435 (500-1)	340-1 455 (500-1)	460-1 1/2 575 (600-1 1/2)
			780-3 895 (900-3)



SW-3, 04 NOV 2021 to 02 DEC 2021

SW-3, 04 NOV 2021 to 02 DEC 2021