

(CPTAN.CPTAN1) 21224

AL-449 (FAA)

CPTAN ONE ARRIVAL (RNAV) Arrival Routes

WEST PALM BEACH, FLORIDA

PALM BEACH APP CON
124.6 317.4
PBI D-ATIS
123.75
PMP ATIS
120.55

RNAV 1 - DME/DME/IRU or GPS.
RADAR required.

NOTE: Descend via MACH number until intercepting 280K. Maintain 280K until slowed by the STAR or assigned by ATC.

NOTE: Jet aircraft only.

NOTE: PBI Landing Rwy 10L, 14: Expect RADAR vectors after DLMAN.

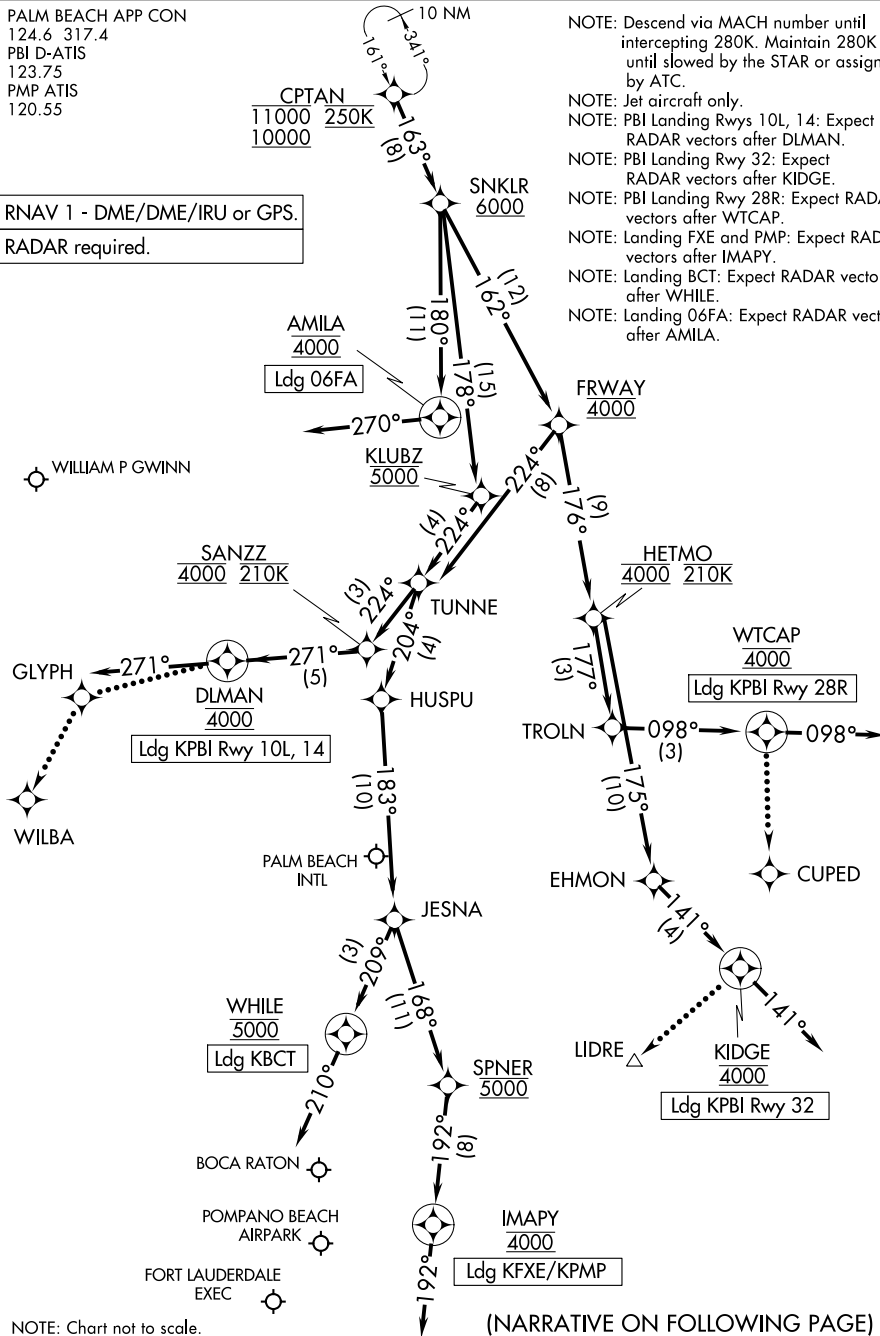
NOTE: PBI Landing Rwy 28R: Expect RADAR vectors after KIDGE.

NOTE: PBI Landing Rwy 28R: Expect RADAR vectors after WTCAP.

NOTE: Landing FXE and PMP: Expect RADAR vectors after IMAPY.

NOTE: Landing BCT: Expect RADAR vectors after WHILE.

NOTE: Landing O6FA: Expect RADAR vectors after AMILA.



NOTE: Chart not to scale.

(NARRATIVE ON FOLLOWING PAGE)

SE-3, 04 NOV 2021 to 02 DEC 2021

SE-3, 04 NOV 2021 to 02 DEC 2021

CPTAN ONE ARRIVAL (RNAV) Arrival Routes

WEST PALM BEACH, FLORIDA

(CPTAN.CPTAN1) 12AUG21