

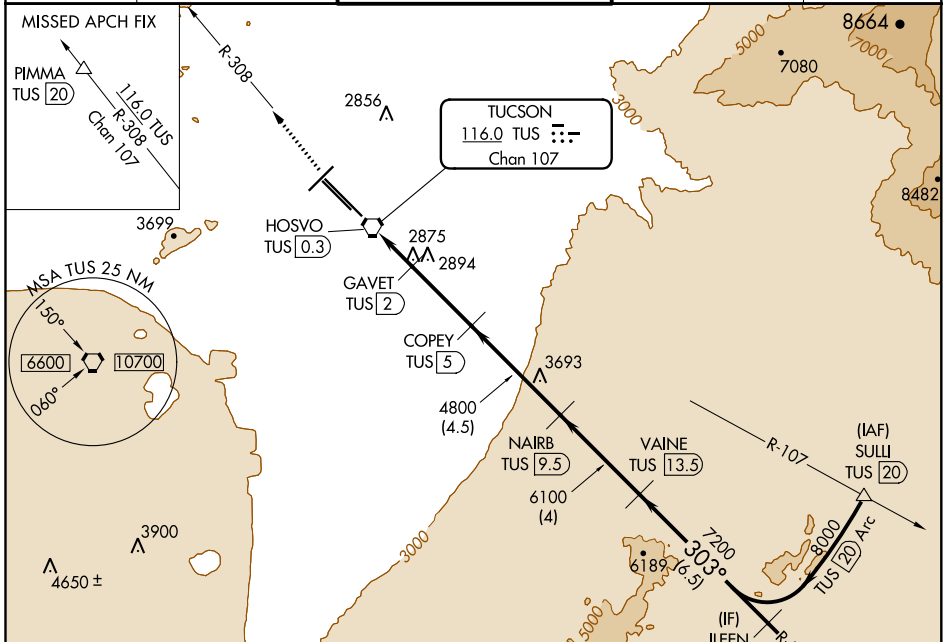
VORTAC TUS 116.0	APP CRS 303°	Rwy Idg TDZE Apt Elev	10996 2643 2643
Chan 107			

VOR or TACAN RWY 29R

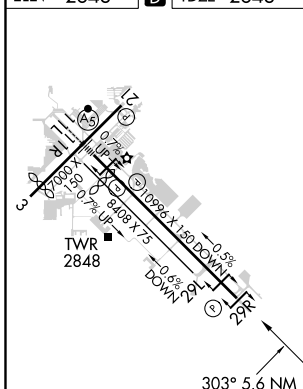
TUCSON INTL (TUS)

DME required.		MISSED APPROACH: Climb to 6500 to PIMMA/TUS 20 DME on TUS R-308.		
---------------	--	--	--	--

ATIS 123.8 279.65	TUCSON APP CON 119.4 318.1	TUCSON TOWER 118.3 257.8	GND CON 124.4 348.6	CLNC DEL 126.65 326.2
-----------------------------	--------------------------------------	------------------------------------	-------------------------------	---------------------------------



ELEV 2643	D	TDZE 2643
-----------	----------	-----------



		6500 TUS R-308	PIMMA △	VGSIs and descent angles not coincident (VGSIs Angle 3.00/TCH 81).		VAINE TUS 13.5	ILEEN TUS 20		
			TUS VORTAC HOSVO TUS 0.3	GAVET TUS 2	COPEY TUS 5	NAIRB TUS 9.5			
					3600	4800	6100		
						7200	8000		
			0.6	0.3	1.7	3	4.5	4	6.5
			CATEGORY		A	B	C	D	E
	S-29R		3160-1	517 (600-1)	3160-1 $\frac{3}{8}$ 517 (600-1 $\frac{3}{8}$)	3160-1 $\frac{1}{2}$ 517 (600-1 $\frac{1}{2}$)	3160-1 $\frac{3}{4}$ 517 (600-1 $\frac{3}{4}$)	3160-1 $\frac{3}{4}$ 517 (600-1 $\frac{3}{4}$)	
	CIRCLING		3160-1 517 (600-1)	3220-1 577 (600-1)	3220-1 $\frac{1}{2}$ 577 (600-1 $\frac{1}{2}$)	3660-3 1017(1100-3)	3920-3 1277(1300-3)		

HIRL Rwy 11L-29R
MIRL Rwy 3-21 and 11R-29L
REIL Rwy 21, 29L and 29R

SW-4, 04 NOV 2021 to 02 DEC 2021

SW-4, 04 NOV 2021 to 02 DEC 2021