

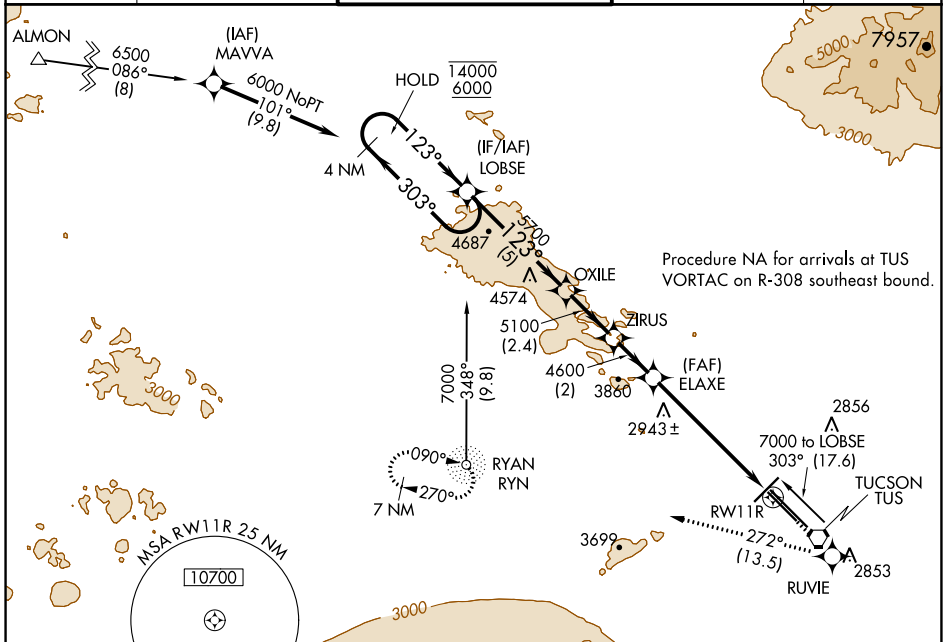
# RNAV (GPS) RWY 11R

TUCSON INTL (TUS)

APP CRS <b>123°</b>	Rwy Idg <b>6998</b>
	TDZE <b>2605</b>
	Apt Elev <b>2643</b>

RNP APCH.	MISSED APPROACH: Climb to 6000 direct RUVIE and on track 272° to RYN NDB and hold.
For uncompensated Baro-VNAV systems, LNAV/VNAV NA below -20°C or above 54°C.	

ATIS <b>123.8 279.65</b>	TUCSON APP CON <b>119.4 318.1</b>	TUCSON TOWER <b>118.3 257.8</b>	GND CON <b>124.4 348.6</b>	CLNC DEL <b>126.65 326.2</b>
-----------------------------	--------------------------------------	------------------------------------	-------------------------------	---------------------------------

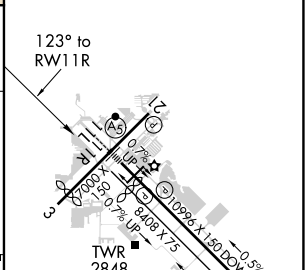
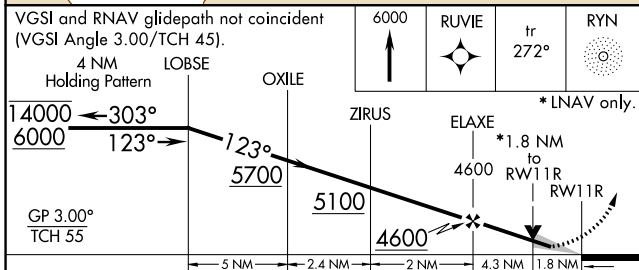


Procedure NA for arrivals at TUS VORTAC on R-308 southeast bound.

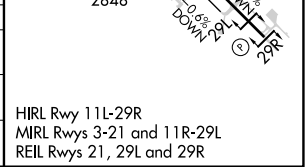
SW-4, 04 NOV 2021 to 02 DEC 2021

SW-4, 04 NOV 2021 to 02 DEC 2021

ELEV 2643	TDZE 2605
-----------	-----------



CATEGORY	A	B	C	D
LNAV/VNAV DA	2965-1¼		360 (400-1¼)	
LNAV MDA	3200-1	595 (600-1)	3200-1¾	595 (600-1¾)
CIRCLING	3200-1 557 (600-1)	3220-1 577 (600-1)	3220-1¾ 577 (600-1¾)	3660-3 1017 (1100-3)



HIRL Rwy 11L-29R  
MIRL Rwys 3-21 and 11R-29L  
REIL Rwys 21, 29L and 29R