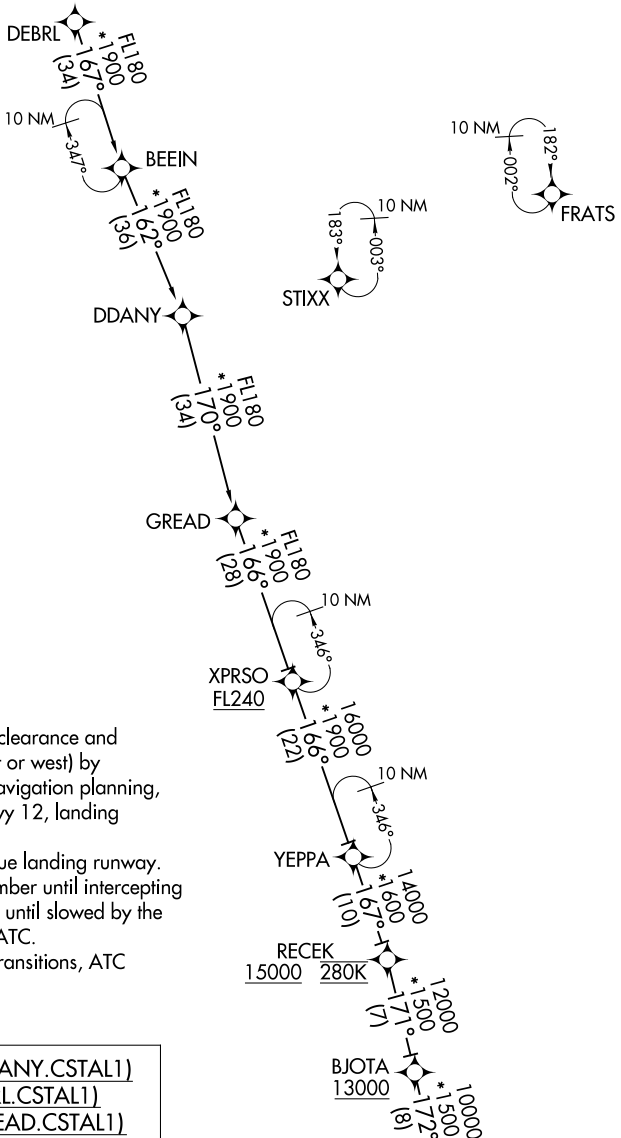


CSTAL ONE ARRIVAL (RNAV) Transition Routes

MIAMI, FLORIDA

MIAMI APP CON
124.85 263.025
KHST ATIS *
132.275 269.9
MIA D-ATIS
119.15
TMB ATIS
124.0
X51 AWOS-3
118.375

RNAV 1 - DME/DME/IRU or GPS.
RADAR required for non-GPS aircraft.



- NOTE: Jet aircraft only.
- NOTE: Expect "descend via" clearance and landing direction (east or west) by ARTCC. For vertical navigation planning, landing east, select Rwy 12, landing west, select Rwy 26L.
- NOTE: MIA approach will issue landing runway.
- NOTE: Descend via mach number until intercepting 280K. Maintain 280K until slowed by the STAR or assigned by ATC.
- NOTE: GREAD and XPRSO Transitions, ATC assigned only.

DDANY TRANSITION (DDANY.CSTAL1)
DEBRL TRANSITION (DEBRL.CSTAL1)
GREAD TRANSITION (GREAD.CSTAL1)
XPRSO TRANSITION (XPRSO.CSTAL1)

(CONTINUED ON FOLLOWING PAGE) NOTE: Chart not to scale.

10 NM
 352°
 CSTAL 16000
 See following page for Arrival Routes.

SE-3, 04 NOV 2021 to 02 DEC 2021

SE-3, 04 NOV 2021 to 02 DEC 2021