

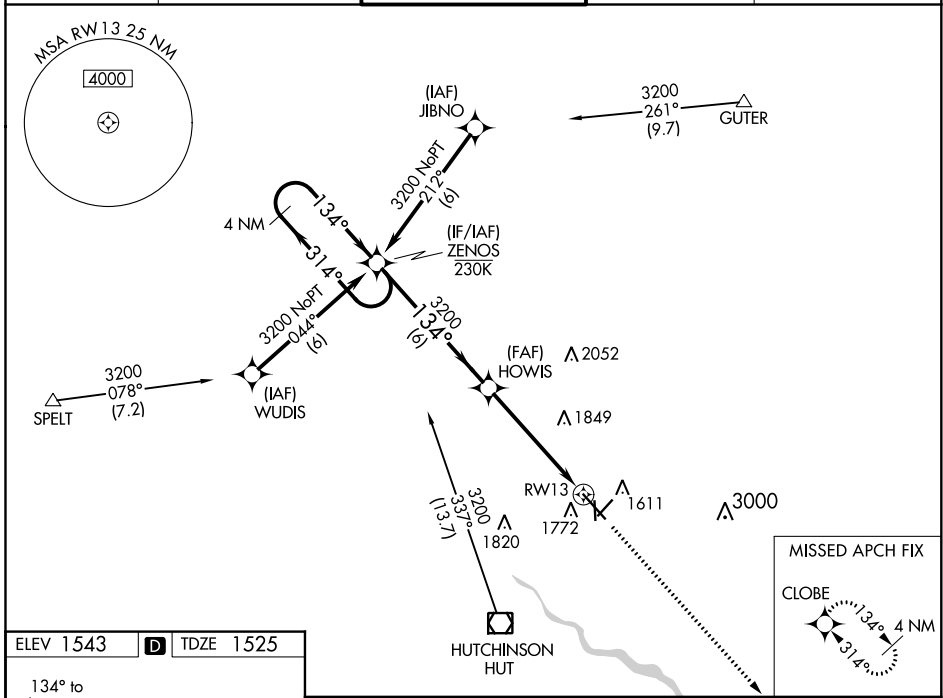
WAAS CH <b>50210</b> <b>W13A</b>	APP CRS <b>134°</b>	Rwy Idg TDZE Apt Elev	<b>7003</b> <b>1525</b> <b>1543</b>
--	------------------------	-----------------------------	---

# RNAV (GPS) RWY 13

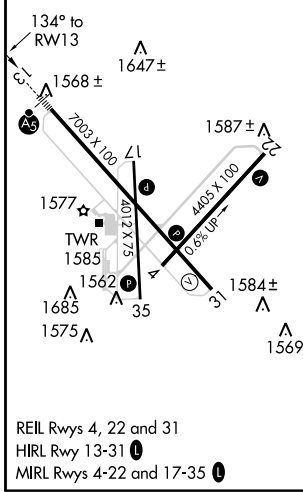
HUTCHINSON RGNL (HUT)

<p><b>⚠</b> Circling to Rwy 22 NA at night. For uncompensated Baro-VNAV systems, LNAV/VNAV NA below -18°C (0°F) or above 54°C (130°F). DME/DME RNP-0.3 NA. # RVR 1800 authorized with use of FD or HUD to DA.</p>	MALSR	MISSED APPROACH: Climb to 3600 direct CLOBE and hold.

ATIS <b>124.25</b>	WICHITA APP CON <b>125.5 306.2</b>	HUTCHINSON TOWER * <b>118.5 (CTAF) 363.0</b>	GND CON <b>121.9</b>	UNICOM <b>122.95</b>
-----------------------	---------------------------------------	---	-------------------------	-------------------------



ELEV 1543	<b>D</b>	TDZE 1525
-----------	----------	-----------



	4 NM Holding Pattern	ZENOS	HOWIS	3600	CLOBE
	3200 ← 314°	3200	3200	↑	✧
	134° →	134° →	134° →		
	GP 3.00°			*1.7 NM to RWY 13	*LNAV only
	TCH 48				
		6 NM	3.4 NM	1.7 NM	
CATEGORY	A	B	C	D	
LPV DA#		1725/24	200 (200-½)		
LNAV/VNAV DA		1932/40	407 (400-¾)		
LNAV MDA	2120/24	595 (600-½)	2120-1¼	595 (600-1¼)	
<b>C</b> CIRCLING	2120-1	577 (600-1)	2200-1¾	2720-3	1177 (1200-3)

NC-2, 04 NOV 2021 to 02 DEC 2021

NC-2, 04 NOV 2021 to 02 DEC 2021