

WAAS CH 49240 W17A	APP CRS 167°	Rwy Idg TDZE Apt Elev	5800 3660 3680
---------------------------------	------------------------	-----------------------------	---

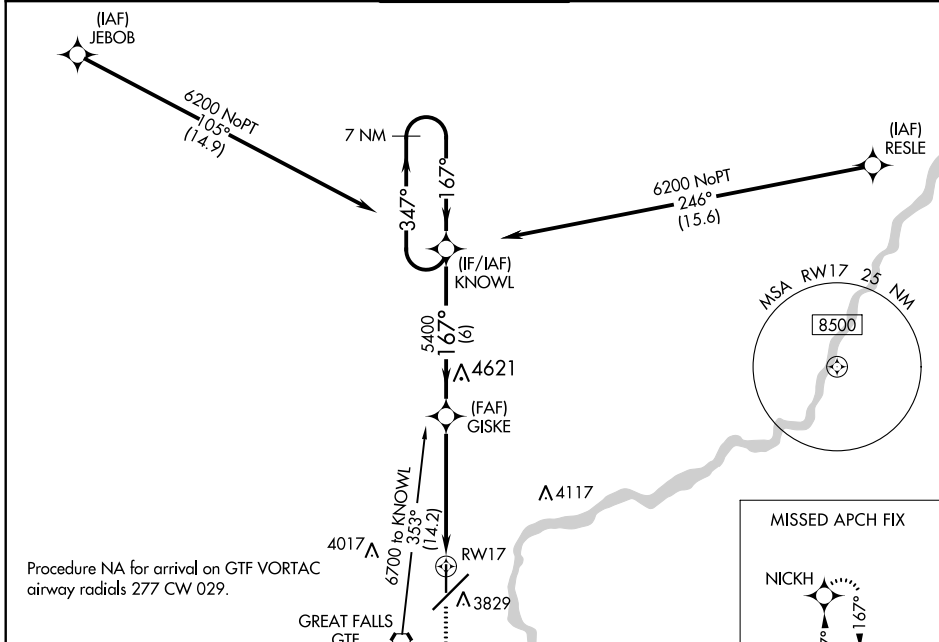
RNAV (GPS) RWY 17

GREAT FALLS INTL (GTF)

⚠ For uncompensated Baro-VNAV systems, LNAV/VNAV NA below -26°C (-1.4°F) or above 52°C (126°F). DME/DME RNP -0.3 NA.

MISSED APPROACH: Climb to 9000 direct NICKH and hold, continue climb-in-hold to 9000.

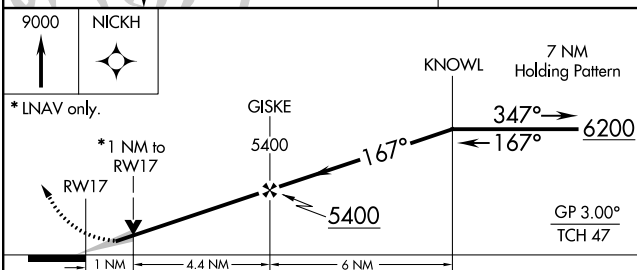
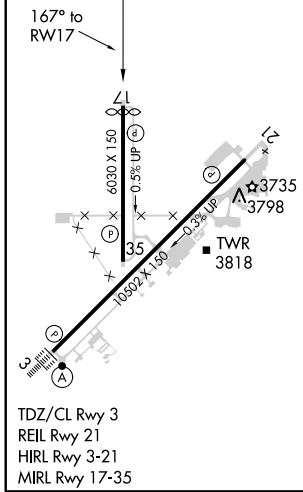
ATIS 126.6 269.0	GREAT FALLS APP CON 128.6 379.175	GREAT FALLS TOWER 118.7 282.2	GND CON 121.7 348.6	CLNC DEL 121.7 348.6
----------------------------	---	---	-------------------------------	--------------------------------



NW-1, 04 NOV 2021 to 02 DEC 2021

NW-1, 04 NOV 2021 to 02 DEC 2021

ELEV 3680	D	TDZE 3660
-----------	----------	-----------



CATEGORY	A	B	C	D
LPV DA		3910-7/8	250 (300-7/8)	
LNAV/VNAV DA		3910-7/8	250 (300-7/8)	
LNAV MDA		4000-1	340 (400-1)	
C CIRCLING	4120-1 440 (500-1)	4140-1 460 (500-1)	4320-1 3/4 640 (700-1 3/4)	4420-2 1/4 740 (800-2 1/4)