

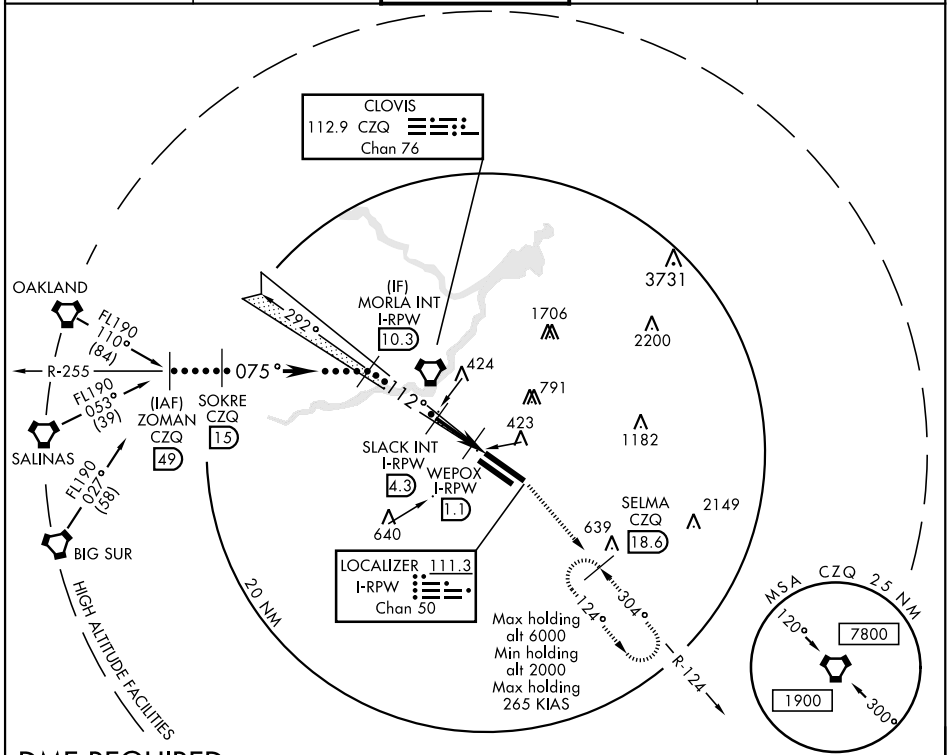
HI-LOC Z RWY 11L

LOC/DME I-RPW 111.3 Chan 50	APCH CRS 112°	Rwy Idg 11L 9539 11R 8008 TDZE 11L 336 11R 333 Arprt Elev 336
---	-------------------------	---

JAL-162 [USAF] FRESNO YOSEMITE INTL (KFAT)

MISSED APPROACH: Climb to 2000 on heading 112° and CZQ VORTAC R-124 to SELMA 18.6 DME and hold.

ATIS 121.35 273.6	FRESNO APP CON 119.6 351.95	FRESNO TOWER 118.2 251.1	GND CON 121.7 348.6	CLNC DEL 124.35 348.6
-----------------------------	---------------------------------------	------------------------------------	-------------------------------	---------------------------------



SW-2, 04 NOV 2021 to 02 DEC 2021

SW-2, 04 NOV 2021 to 02 DEC 2021

DME REQUIRED

EMERG SAFE ALT 100 NM 16,700

ZOMAN CZQ R-255 FL190 (49)	SOKRE CZQ (15)	MORLA INT I-RPW (10.3)	SLACK INT I-RPW (4.3)	WEPOX I-RPW (1.1)	I-RPW DME (0.2)	2000	SELMA CZQ R-124 (18.6)	ELEV 336	TDZE 11L 336 TDZE 11R 333
CATEGORY	C		D		E				
S-LOC 11L	680/55		344		(400-1¼)		Rwy 29R Idg 9227'		
SIDE STEP RWY 11R	680-1½ 347 (400-1½)		680-2		347 (400-2)		REIL Rwy 11L and 11R HIRL Rwy 11L-29R MIRL Rwy 11R-29L TDZL/CL Rwy 29R		
C CIRCLING	920-1½ 584 (600-1½)		920-2 584 (600-2)		1140-2¾ 804 (900-2¾)		TWR 445 363		

HI-LOC Z RWY 11L