

(OAL4.OAL) 17341

COALDALE FOUR DEPARTURE

AL-162 (FAA)

FRESNO YOSEMITE INTL (FAT)
FRESNO, CALIFORNIA

ATIS
121.35 273.6
CLNC DEL
124.35 348.6
GND CON
121.7 348.6
FRESNO TOWER
118.2 251.1
FRESNO DEP CON
119.6 351.95

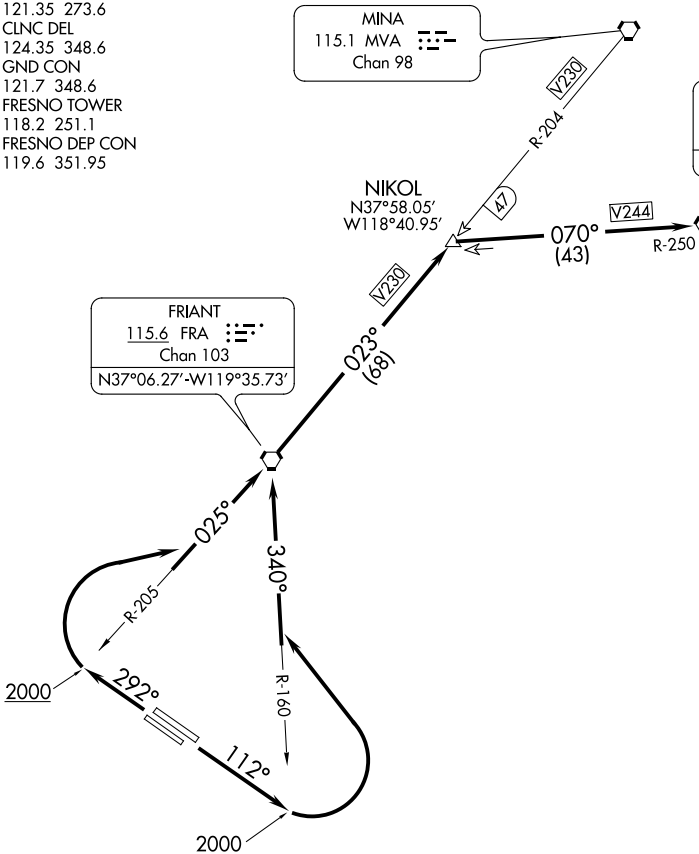
MINA
115.1 MVA
Chan 98

**TOP ALTITUDE:
ASSIGNED BY ATC**

COALDALE
117.7 OAL
Chan 124
N38°00.20'-W117°46.23'
L-9, H-3

NIKOL
N37°58.05'
W118°40.95'

FRIANT
115.6 FRA
Chan 103
N37°06.27'-W119°35.73'



TAKEOFF MINIMUMS
Rwys 11L/R, 29L/R: Standard with minimum climb of 260' per NM to 10700.

NOTE: Chart not to scale.



DEPARTURE ROUTE DESCRIPTION

TAKEOFF RUNWAYS 11L/R: Climb on heading 112° to 2000', then climbing left turn to intercept FRA R-160 to FRA VORTAC, thence. . .
TAKEOFF RUNWAYS 29L/R: Climb on heading 292° to 2000', then climbing right turn to intercept FRA R-205 to FRA VORTAC, thence. . .

. . . continue climb to 14300 on FRA VORTAC R-023 and MVA VORTAC R-204 to NIKOL INT and on OAL VORTAC R-250 to OAL VORTAC. Maintain ATC assigned altitude.

COALDALE FOUR DEPARTURE
(OAL4.OAL) 07DEC17

FRESNO, CALIFORNIA
FRESNO YOSEMITE INTL (FAT)

SW-2, 04 NOV 2021 to 02 DEC 2021

SW-2, 04 NOV 2021 to 02 DEC 2021