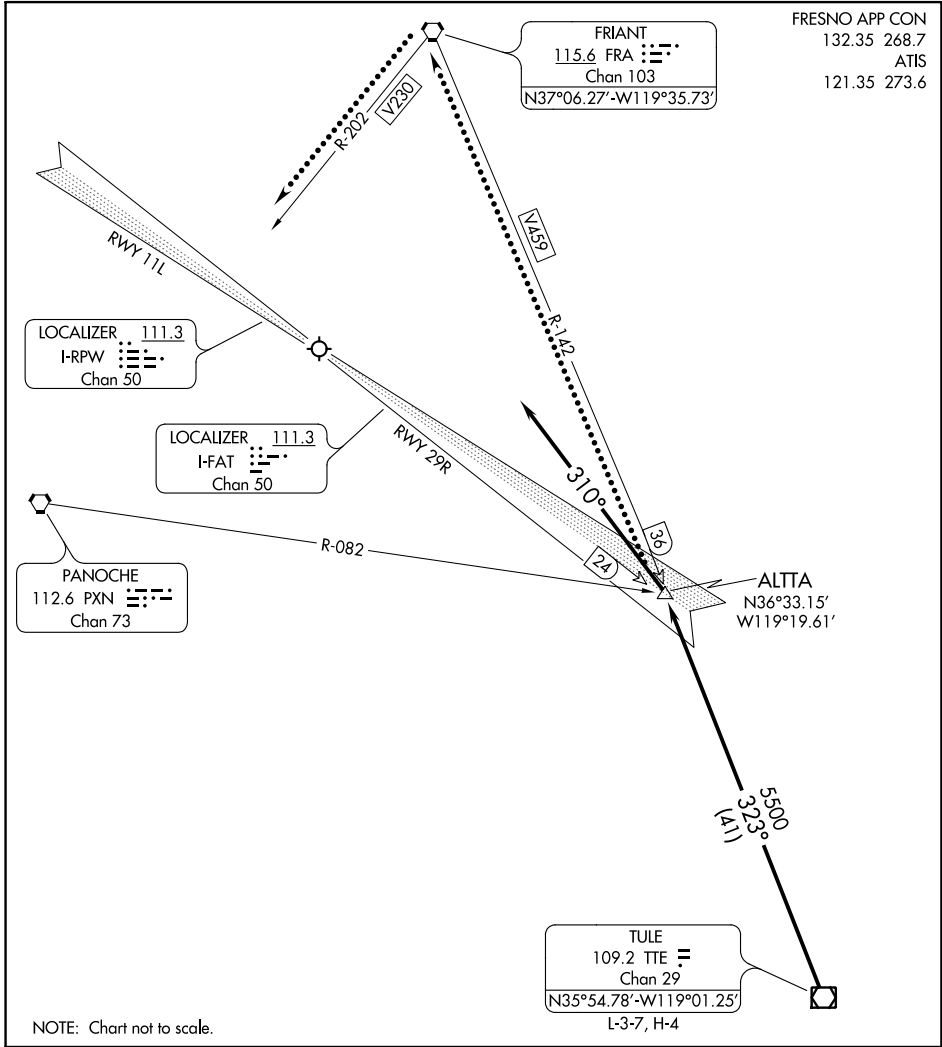


# ALTA NINE ARRIVAL

AL-162 (FAA)

FRESNO APP CON  
132.35 268.7  
ATIS  
121.35 273.6



SW-2, 04 NOV 2021 to 02 DEC 2021

SW-2, 04 NOV 2021 to 02 DEC 2021

## ARRIVAL ROUTE DESCRIPTION

From over TULE (TTE) VOR/DME on TTE R-323 and FRIANT (FRA) VORTAC R-142 to ALTA. Expect ILS or LOC RWY 29R approach. For Rwy 11L operations: Depart ALTA heading 310° and expect RADAR vectors to LOC Y RWY 11L.

LOST COMMUNICATIONS: Rwy 11L: Proceed to FRA VORTAC on V459, then on V230, execute the LOC Y RWY 11L approach.