

WAAS CH <b>82030</b> <b>W03B</b>	APP CRS <b>041°</b>	Rwy Idg TDZE Apt Elev	<b>5465</b> <b>1503</b> <b>1503</b>
--	------------------------	-----------------------------	---

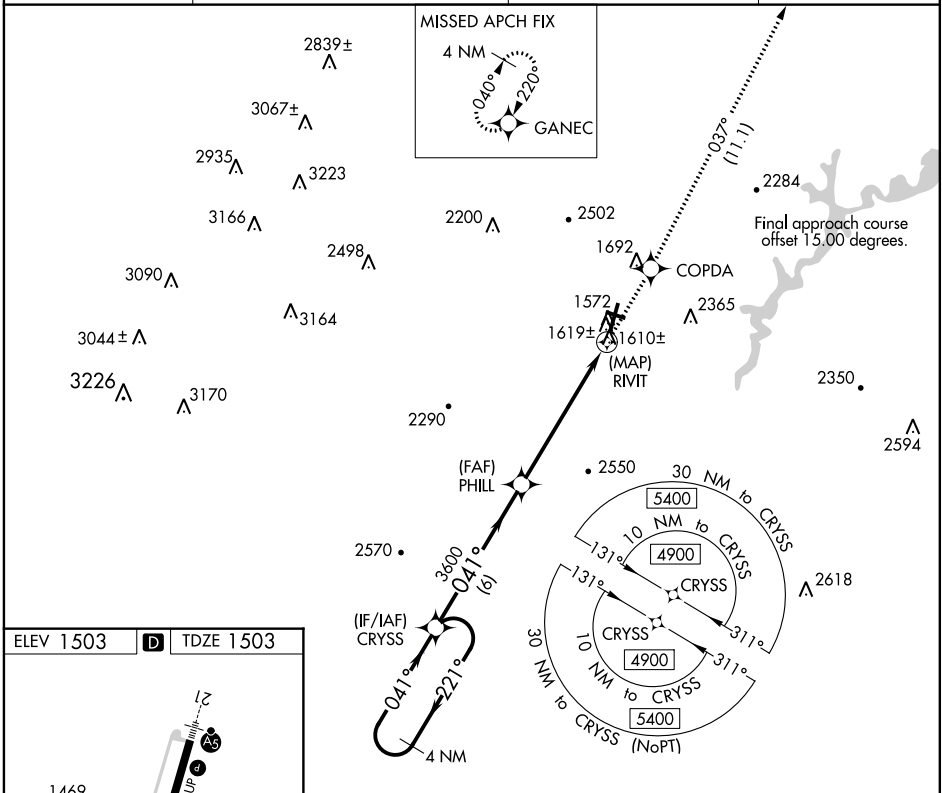
# RNAV (GPS) Y RWY 3

ALTOONA-BLAIR COUNTY (A00)

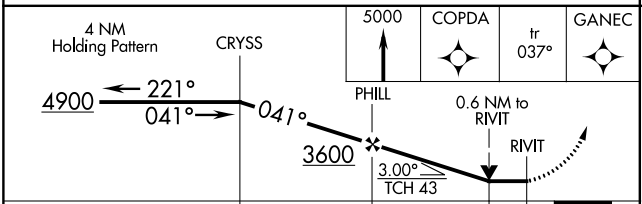
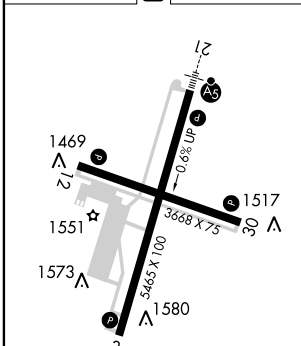
RNP APCH:  
 ▼ When local altimeter setting not received, use Bedford County altimeter setting, increase all MDA 100 feet. Increase LNAV and LP Cat C/D visibilities  $\frac{3}{8}$  SM and Circling Cat A  $\frac{1}{4}$  SM.  
 ▲ Rwy 3, helicopter visibility reduction below  $\frac{3}{4}$  SM NA. Circling NA to Rwy's 12 and 30. VDP NA when using Bedford County altimeter setting.

MISSED APPROACH: Climb to 5000 direct COPDA on track 037° to GANEC and hold, continue climb-in-hold to 5000.

ASOS <b>127.125</b>	JOHNSTOWN APP CON ★ <b>121.2 299.2</b>	CTAF <b>123.6</b>	UNICOM <b>123.0</b>
------------------------	---	----------------------	------------------------



ELEV 1503	<b>D</b>	TDZE 1503
-----------	----------	-----------



CATEGORY	A	B	C	D
LP MDA		1860-1	357 (400-1)	
LNAV MDA		1880-1	377 (400-1)	
<b>C</b> CIRCLING	2240-1 737 (800-1)	2240-1 $\frac{1}{4}$ 737 (800-1 $\frac{1}{4}$ )	2800-3 1297 (1300-3)	2840-3 1357 (1400-3)

HIRL Rwy 3-21  
 MIRL Rwy 12-30  
 REIL Rwy 3, 12, and 30

NE-4, 04 NOV 2021 to 02 DEC 2021

NE-4, 04 NOV 2021 to 02 DEC 2021