

APP CRS	Rwy Idg	<b>2443</b>
<b>322°</b>	TDZE	<b>7</b>
	Apt Elev	<b>7</b>

# RNAV (GPS) RWY 31

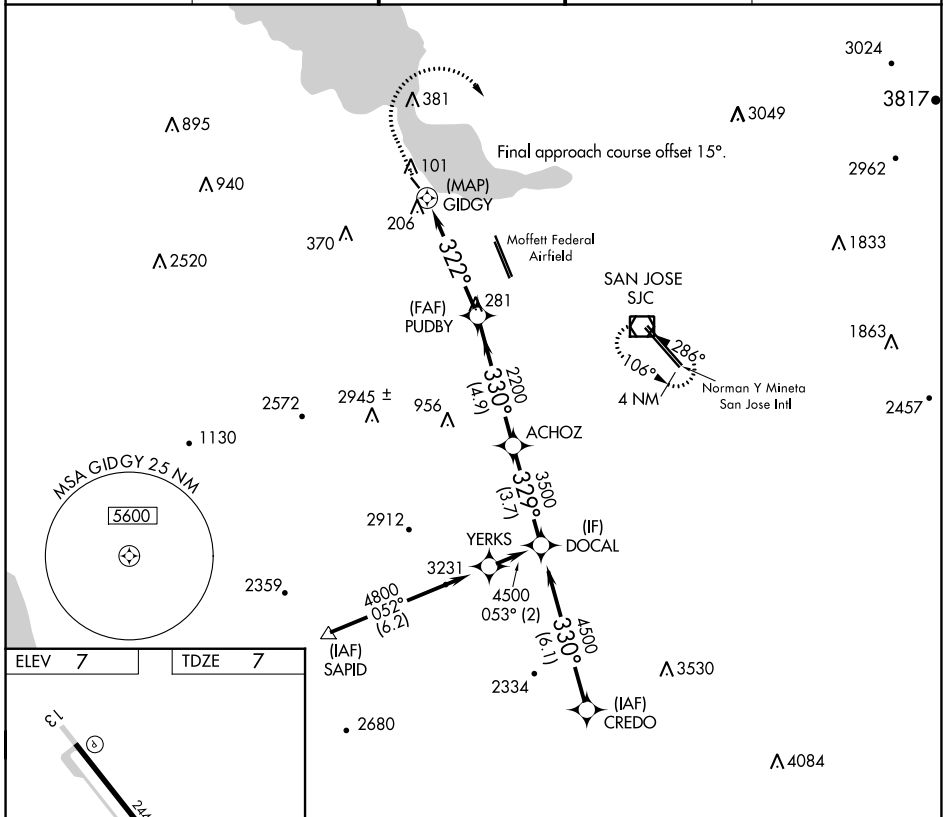
PALO ALTO (PAO)

RNP APCH

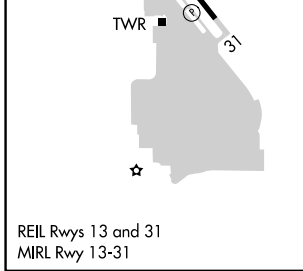
**⚠** Circling NA southwest of Rwy 13-31. Rwy 31 helicopter visibility reduction below 1 SM NA. Procedure NA at night. When control tower closed, use Norman Y Mineta San Jose Intl altimeter setting and increase all MDAs 40 feet.

**MISSED APPROACH:** Climb to 1400 then climbing right turn to 3000 direct SJC VOR/DME and hold.

ATIS <b>135.275</b>	NORCAL APP CON <b>121.3 270.35</b>	<b>PALO ALTO TOWER*</b> <b>118.6 (CTAF)</b>	GND CON <b>125.0</b>	UNICOM <b>122.95</b>
------------------------	---------------------------------------	--	-------------------------	-------------------------



ELEV	7	TDZE	7
------	---	------	---



PALO ALTO, CALIFORNIA  
Amdt 2 10OCT19

1400	3000	SJC	
↑	↷	☐	
GIDGY → 322° → 2200		PUDBY → 330° → 3500	ACHOZ → 329° → 4500
0.5	4.6 NM	4.9 NM	3.7 NM
CATEGORY	A	B	C
LNAV MDA	460-1	453 (500-1)	NA
<b>☑</b> CIRCLING	460-1 453 (500-1)	520-1 513 (600-1)	NA

# RNAV (GPS) RWY 31

SW-2, 07 OCT 2021 to 04 NOV 2021

SW-2, 07 OCT 2021 to 04 NOV 2021