

WAAS CH <b>90515</b> <b>W07A</b>	APP CRS <b>068°</b>	Rwy Idg TDZE <b>1532</b> Apt Elev <b>1538</b>	<b>3500</b>
--	------------------------	---	-------------

# RNAV (GPS) RWY 7

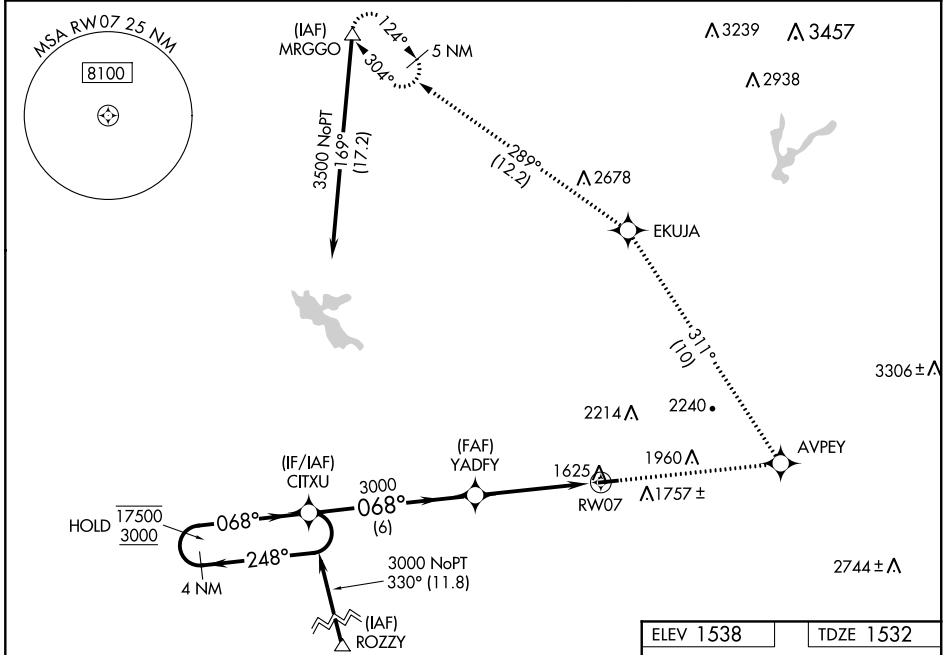
AUBURN MUNI (AUN)

RNP APCH.

**⚠** Circling Rwy 25 NA at night. Rwy 7 helicopter visibility reduction below 3/4 SM NA. For uncompensated Baro-VNAV systems, LNAV/VNAV NA below -18°C or above 54°C.

MISSED APPROACH: Climb to 5000 direct AVPEY and left turn on track 311° to EKUJA and on track 289° to MRGGO and hold.

AWOS-3 <b>119.375</b>	NORCAL APP CON <b>125.4 317.5</b>	UNICOM <b>122.7 (CTAF) 0</b>
--------------------------	--------------------------------------	---------------------------------



VGSi and RNAV glidepath not coincident (VGSi Angle 3.00/TCH 21).		5000 AVPEY	EKUJA tr 311°	MRGGO tr 289°
4 NM Holding Pattern	CITXU	YADFY	*LNAV only	
17500 3000	← 248°	→ 068°	3000	*1.8 NM to RW07
GP 3.00° TCH 45	← 068°	→ 068°	3000	RW07
6 NM		2.7 NM	1.8 NM	
CATEGORY	A	B	C	D
LPV DA	1848-1¼	316 (400-1¼)		NA
LNAV/VNAV DA	1968-1¾	436 (500-1¾)		NA
LNAV MDA	2100-1	568 (600-1)		NA
<b>C</b> CIRCLING	2200-1 662 (700-1)	2400-1¼ 862 (900-1¼)		NA

068° to RW07

MIRL Rwy 7-25 0

SW-2, 07 OCT 2021 to 04 NOV 2021

SW-2, 07 OCT 2021 to 04 NOV 2021