

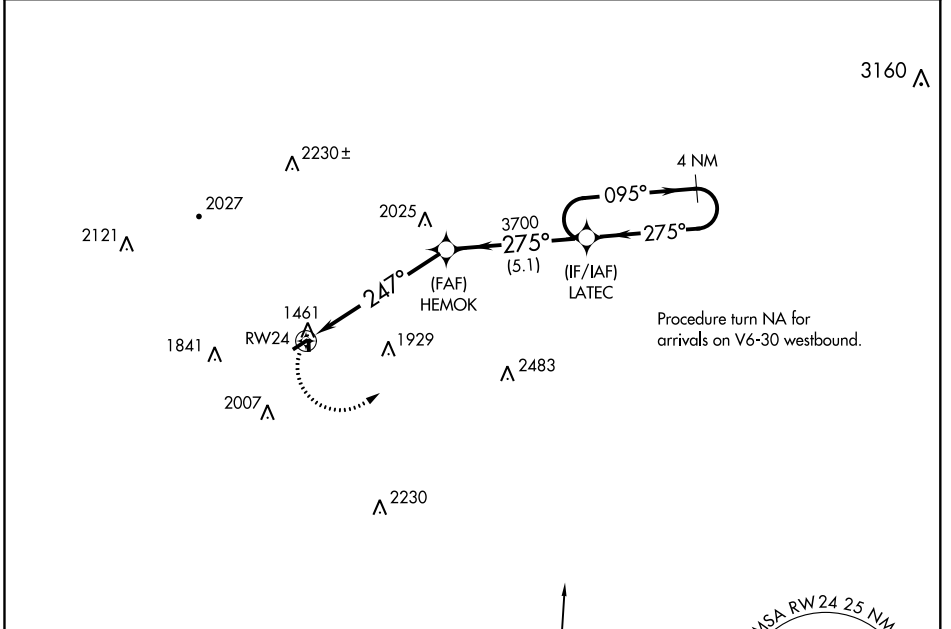
APP CRS 247°	Rwy Idg TDZE Apt Elev	3003 1439 1439
------------------------	-----------------------------	---

RNAV (GPS) RWY 24

PUNXSUTAWNEY MUNI (N35)

<p>▼ Use Indiana County/Jimmy Stewart Field altimeter setting. DME/DME RNP-0.3 NA.</p> <p>▲ NA Helicopter visibility reduction below ¾ SM NA.</p>	MISSED APPROACH: Climbing left turn to 4000 direct LATEC and hold.
---	--

IDI AWOS-3 126.625	CLEVELAND CENTER 126.725 291.65	UNICOM 123.0 (CTAF) 0
------------------------------	---	---------------------------------



NE-4, 07 OCT 2021 to 04 NOV 2021

NE-4, 07 OCT 2021 to 04 NOV 2021

