

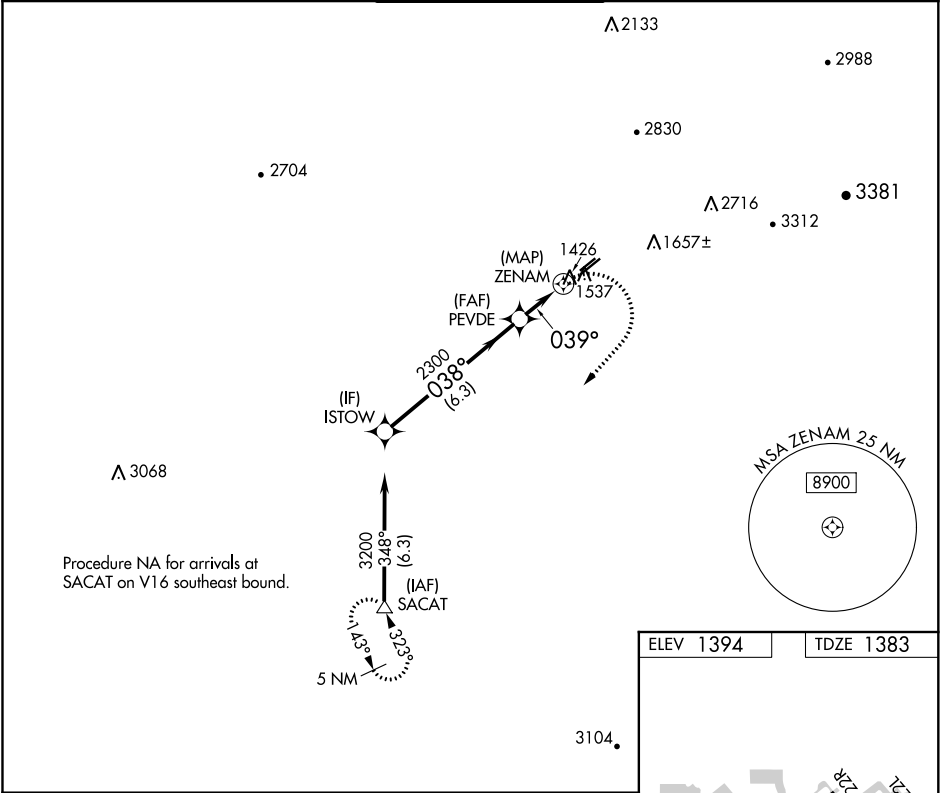
WAAS CH 56625 W04A	APP CRS 039°	Rwy Idg TDZE Apt Elev	3799 1383 1394
--	------------------------	-----------------------------	---

RNAV (GPS) RWY 4L

FALCON FLD (F'F'Z)

RNP APCH.		MISSED APPROACH: Climbing right turn to 5000 direct SACAT and hold, continue climb-in-hold to 5000.		
Rwy 4L helicopter visibility reduction below 1 SM NA.				

ATIS 118.25	PHOENIX APP CON 120.7 239.0	FALCON TOWER * 124.6 (CTAF) 0	GND CON 121.3	UNICOM 122.95
-----------------------	---------------------------------------	---	-------------------------	-------------------------



Procedure NA for arrivals at SACAT on V16 southeast bound.

ELEV 1394	TDZE 1383
-----------	-----------

REIL Rwy 4L, 4R, 22L and 22R
MIRL Rwy 4R-22L **0**
MIRL Rwy 4L-22R

ISTOW	VGSIs and descent angles not coincident (VGSi Angle 4.00/TCH 42).			5000	SACAT
3200	038°	2300	039°		
6.3 NM		2 NM		0.8 NM	
CATEGORY	A	B	C	D	
LP MDA	1780-1	397 (400-1)	1780-1 1/8 397 (400-1 1/8)	NA	
LNAV MDA	1800-1	417 (500-1)	1800-1 1/8 417 (500-1 1/8)	NA	

SW-4, 07 OCT 2021 to 04 NOV 2021

SW-4, 07 OCT 2021 to 04 NOV 2021