

RNAV (GPS) RWY 19

JAMES A RHODES (I43)

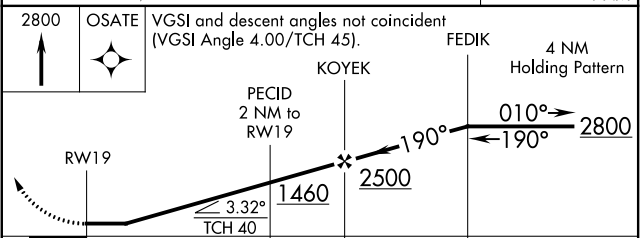
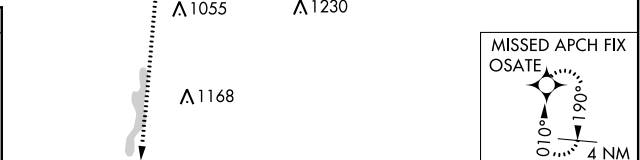
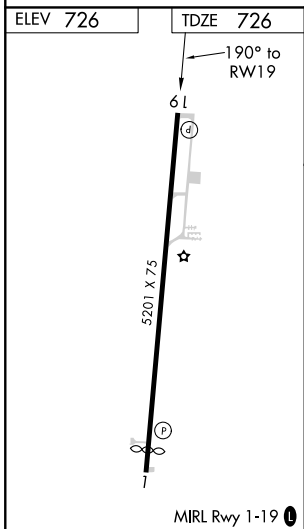
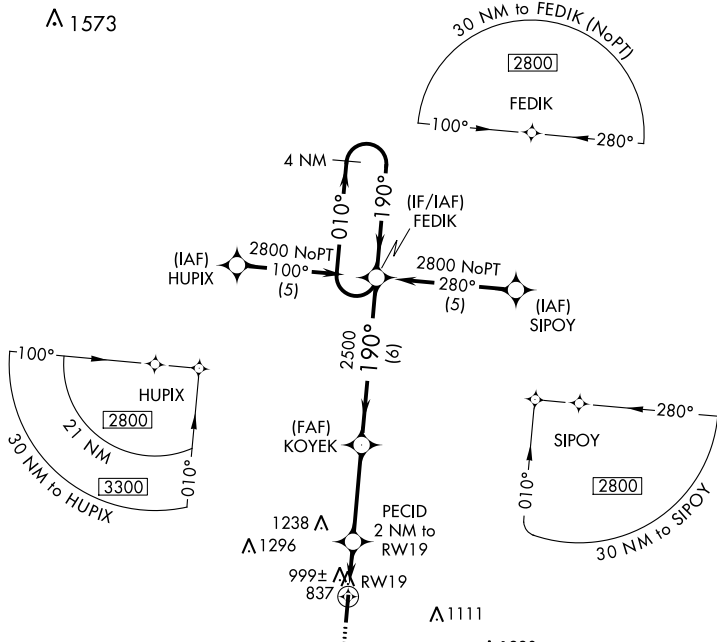
APP CRS 190°	Rwy Idg TDZE Apt Elev	5201 726 726
------------------------	-----------------------------	---

RNP APCH.

NA When local altimeter setting not received, use Greater Portsmouth altimeter setting and increase all MDA 60 feet, and increase LNAV Cat C/D and Circling Cat B visibility $\frac{1}{4}$ SM. Rwy 19 helicopter visibility reduction below $\frac{3}{4}$ SM NA. Circling Rwy 1 NA at night.

MISSED APPROACH:
Climb to 2800 direct OSATE WP and hold.

AWOS-3 118.825	HUNTINGTON APP CON 128.4 270.1	UNICOM 122.7 (CTAF)
--------------------------	--	-------------------------------



CATEGORY	A	B	C	D
LNAV MDA	1280-1	554 (600-1)	1280-1½ 554 (600-1½)	1280-1¾ 554 (600-1¾)
CIRCLING	1340-1 614 (700-1)	1480-1 754 (800-1)	1680-3	954 (1000-3)

EC-2, 07 OCT 2021 to 04 NOV 2021

EC-2, 07 OCT 2021 to 04 NOV 2021