

WAAS CH <b>70500</b> <b>W24A</b>	APP CRS <b>240°</b>	Rwy Idg TDZE Apt Elev	<b>4001</b> <b>18</b> <b>19</b>
--	------------------------	-----------------------------	---------------------------------------

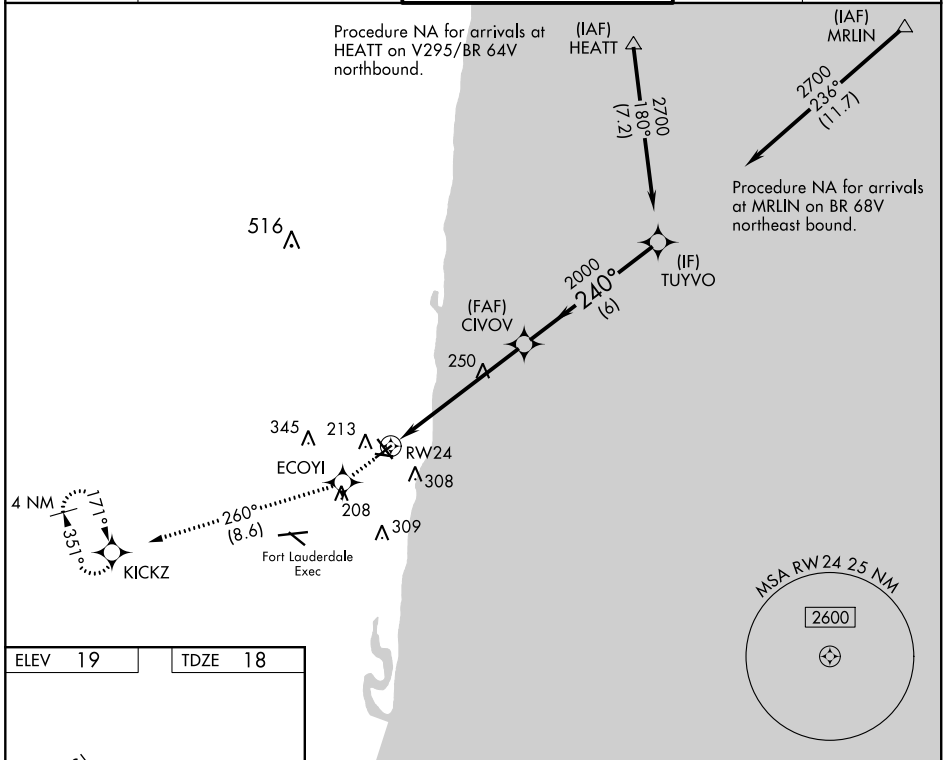
# RNAV (GPS) RWY 24

POMPANO BEACH AIRPARK (PMP)

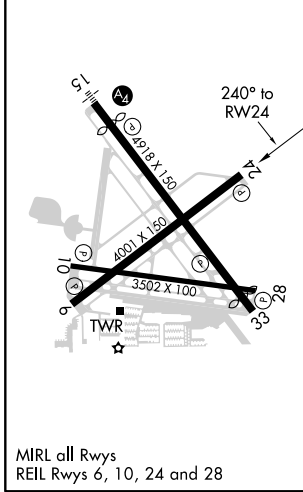
**⚠** DME/DME RNP-0.3 NA. When local altimeter setting not received, use Fort Lauderdale Exec altimeter setting. Helicopter visibility reduction below 3/4 SM NA.

**⚠** MISSED APPROACH: Climb to 2000 direct ECOYI and on track 260° to KICKZ and hold.

ATIS <b>120.55</b>	MIAMI APP CON <b>119.7 306.3</b>	<b>POMPANO BEACH TOWER *</b> <b>125.4 (CTAF) 0</b>	GND CON <b>121.9</b>	UNICOM <b>122.95</b>
-----------------------	-------------------------------------	---	-------------------------	-------------------------



ELEV 19	TDZE 18
---------	---------



2000	ECOYI	tr 260°	KICKZ	VGSI and RNAV glidepath not coincident (VGSI Angle 3.50/TCH 49).
*LNAV only.				
CATEGORY	A	B	C	D
LPV DA	319-1	301 (300-1)		NA
LNAV MDA	500-1	482 (500-1)		NA
<b>C</b> CIRCLING	660-1	641 (700-1)		NA

SE-3, 07 OCT 2021 to 04 NOV 2021

SE-3, 07 OCT 2021 to 04 NOV 2021