

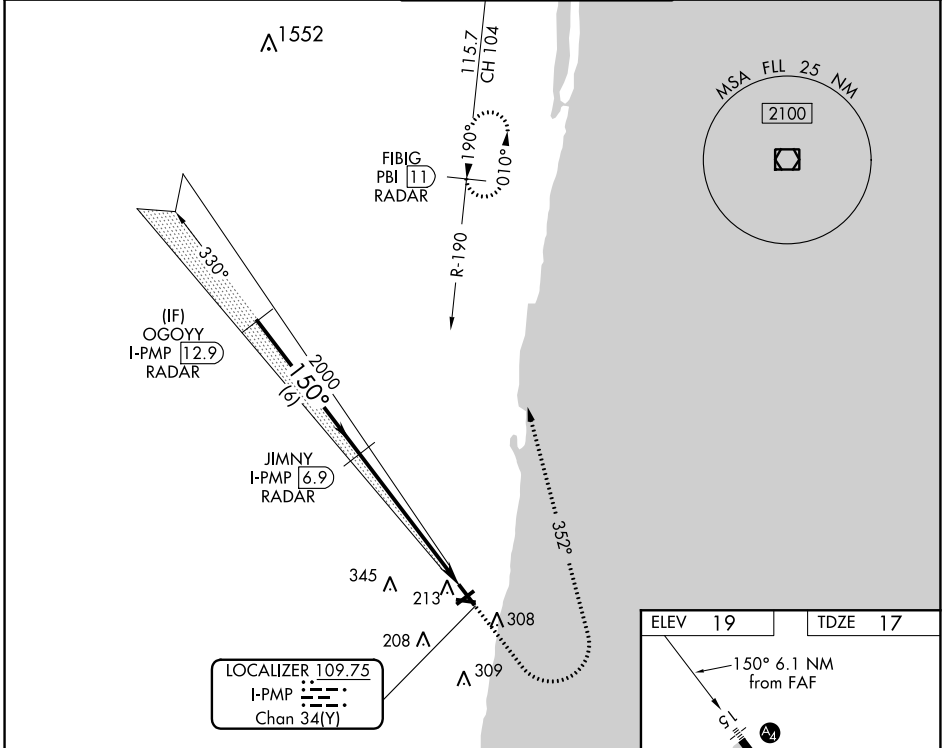
LOC/DME I-PMP <b>109.75</b> Chan <b>34(Y)</b>	APP CRS <b>150°</b>	Rwy ldg <b>4418</b> TDZE <b>17</b> Apt Elev <b>19</b>
---	------------------------	---

# LOC RWY 15

POMPANO BEACH AIRPARK (PMP)

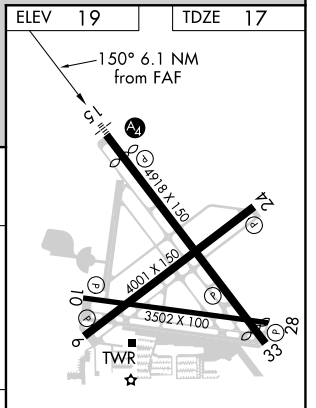
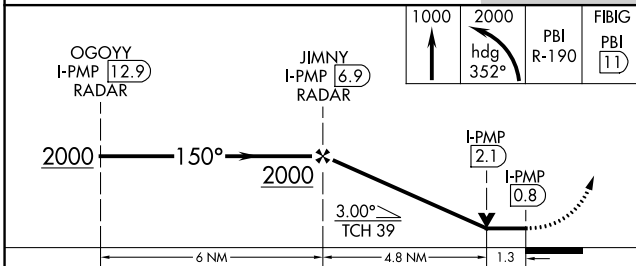
DME required. RADAR required for procedure entry.		MALS 	MISSED APPROACH: Climb to 1000 then climbing left turn to 2000 on heading 352° and PBI VORTAC R-190 to FIBIG/PBI 11 DME/RADAR and hold.
Rwy 15 helicopter visibility reduction below 1 SM NA. Inop table does not apply. Straight-in Rwy 15 NA at night, Circling Rwy 15 NA at night.			

ATIS <b>120.55</b>	MIAMI APP CON <b>119.7 306.3</b>	POMPANO BEACH TOWER ★ <b>125.4 (CTAF) 0</b>	GND CON <b>121.9</b>	UNICOM <b>122.95</b>
-----------------------	-------------------------------------	--	-------------------------	-------------------------



SE-3, 07 OCT 2021 to 04 NOV 2021

SE-3, 07 OCT 2021 to 04 NOV 2021



	1000	2000	PBI R-190	FIBIG (11)
	↑	hdg 352°		
	2000	2000		
	6 NM	4.8 NM	1.3	
CATEGORY	A	B	C	D
S-LOC 15	480-1	463 (500-1)	NA	
CIRCLING	660-1	641 (700-1)	NA	

MIRL all Rwys  
REIL Rws 6, 10, 24 and 28